

Product datasheet for **TA305627**

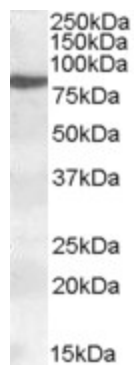
ALOX15 Goat Polyclonal Antibody

Product data:

| | |
|------------------------------|---|
| Product Type: | Primary Antibodies |
| Applications: | WB |
| Recommended Dilution: | WB: 0.2-0.5ug/ml. |
| Reactivity: | Human |
| Host: | Goat |
| Isotype: | IgG |
| Clonality: | Polyclonal |
| Immunogen: | Peptide with sequence C-HYKTDVAVKDDPE, from the internal region of the protein sequence according to NP_001131.3. |
| Formulation: | 0.5 mg/ml in Tris saline, 0.02% sodium azide, pH7.3 with 0.5% bovine serum albumin |
| Purification: | Purified from goat serum by ammonium sulphate precipitation followed by antigen affinity chromatography using the immunizing peptide. Supplied at 0.5 mg/ml in Tris saline, 0.02% sodium azide, pH7.3 with 0.5% bovine serum albumin. Aliquot and store at -20C. Minimize freezing and thawing. |
| Conjugation: | Unconjugated |
| Storage: | Store at -20°C as received. |
| Stability: | Stable for 12 months from date of receipt. |
| Gene Name: | arachidonate 15-lipoxygenase |
| Database Link: | NP_001131 Entrez Gene 246 Human P16050 |
| Synonyms: | 12-LOX; 15-LOX-1; 15LOX-1 |
| Protein Families: | Druggable Genome |
| Protein Pathways: | Arachidonic acid metabolism, Linoleic acid metabolism, Metabolic pathways |



[View online »](#)

Product images:

TA305627 (0.2ug/ml) staining of nuclear HeLa lysate (35ug protein in RIPA buffer). Primary incubation was 1 hour. Detected by chemiluminescence.