

Product datasheet for **TA305618**

CYBB Goat Polyclonal Antibody

Product data:

Product Type:	Primary Antibodies
Applications:	IHC, WB
Recommended Dilution:	WB: 0.03-0.1 µg/ml. IHC: 2-4 µg/ml.
Reactivity:	Human (Expected from sequence similarity: Dog)
Host:	Goat
Isotype:	IgG
Clonality:	Polyclonal
Immunogen:	Peptide with sequence C-SYLNFKRIKKNP, from the internal region of the protein sequence according to NP_000388.2.
Formulation:	0.5 mg/ml in Tris saline, 0.02% sodium azide, pH7.3 with 0.5% bovine serum albumin
Concentration:	lot specific
Purification:	Purified from goat serum by ammonium sulphate precipitation followed by antigen affinity chromatography using the immunizing peptide. Supplied at 0.5 mg/ml in Tris saline, 0.02% sodium azide, pH7.3 with 0.5% bovine serum albumin. Aliquot and store at -20C. Minimize freezing and thawing.
Conjugation:	Unconjugated
Storage:	Store at -20°C as received.
Stability:	Stable for 12 months from date of receipt.
Gene Name:	cytochrome b-245 beta chain
Database Link:	NP_000388 Entrez Gene 491825 Dog Entrez Gene 1536 Human P04839



[View online »](#)

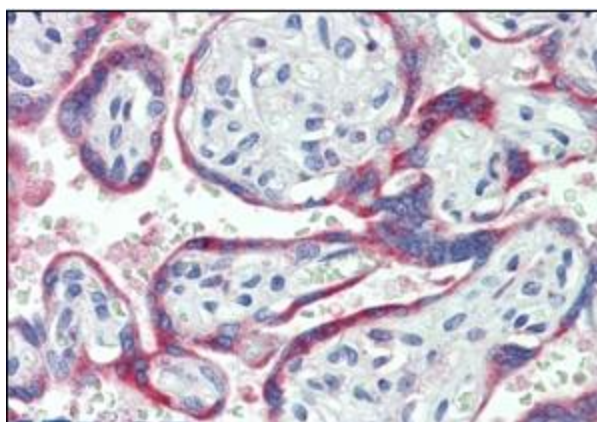
Background: Cytochrome b (-245) is composed of cytochrome b alpha (CYBA) and beta (CYBB) chain. It has been proposed as a primary component of the microbicidal oxidase system of phagocytes. CYBB deficiency is one of five described biochemical defects associated with chronic granulomatous disease (CGD). In this disorder, there is decreased activity of phagocyte NADPH oxidase; neutrophils are able to phagocytize bacteria but cannot kill them in the phagocytic vacuoles. The cause of the killing defect is an inability to increase the cell's respiration and consequent failure to deliver activated oxygen into the phagocytic vacuole. [provided by RefSeq]

Synonyms: AMCBX2; CGD; GP91-1; GP91-PHOX; GP91PHOX; IMD34; NOX2; p91-PHOX

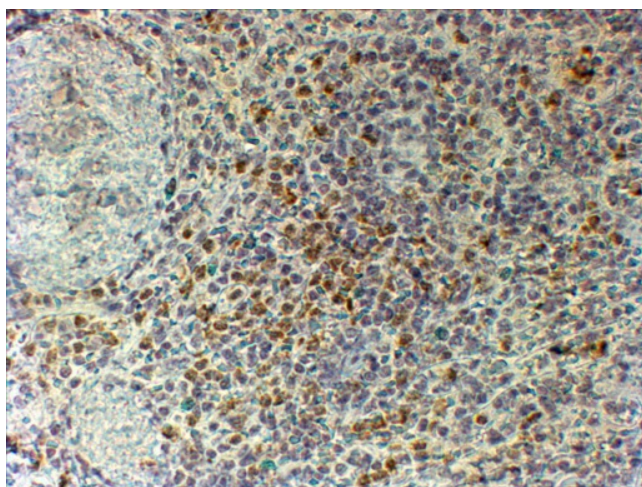
Protein Families: Druggable Genome, Ion Channels: Other, Transmembrane

Protein Pathways: Leukocyte transendothelial migration

Product images:



TA305618 (3.8ug/ml) staining of paraffin embedded Human Placenta. Steamed antigen retrieval with citrate buffer pH 6, AP-staining.



TA305618 (2 ug/ml) staining of paraffin embedded Human Spleen. Steamed antigen retrieval with citrate buffer pH 6, HRP-staining.