

Product datasheet for **TA303844**

Tuberin (TSC2) Rabbit Monoclonal Antibody [Clone ID: EP1062Y]

Product data:

Product Type:	Primary Antibodies
Clone Name:	EP1062Y
Applications:	WB
Recommended Dilution:	WB: 1:10000; ICC: 1:50 - 1:100
Reactivity:	Mouse, Rat, Human
Modifications:	Phospho-specific
Host:	Rabbit
Isotype:	IgG
Clonality:	Monoclonal
Immunogen:	A synthetic peptide corresponding to residues of human Tuberin was used as an immunogen
Formulation:	PBS 49%,Sodium azide 0.01%,Glycerol 50%,BSA 0.05%
Purification:	Tissue culture supernatant
Conjugation:	Unconjugated
Storage:	Store at -20°C as received.
Stability:	Stable for 12 months from date of receipt.
Predicted Protein Size:	201 kDa
Gene Name:	tuberous sclerosis 2
Database Link:	NP_000539 Entrez Gene 22084 Mouse Entrez Gene 24855 Rat Entrez Gene 7249 Human P49815
Background:	Mutations in this gene lead to tuberous sclerosis complex. Its gene product is believed to be a tumor suppressor and is able to stimulate specific GTPases. The protein associates with hamartin in a cytosolic complex, possibly acting as a chaperone for hamartin. Alternative splicing results in multiple transcript variants encoding different isoforms. [provided by RefSeq]
Synonyms:	LAM; PPP1R160; TSC4
Note:	Is unsuitable for Flow Cyt,IHC-Fr,IHC-P or IP.

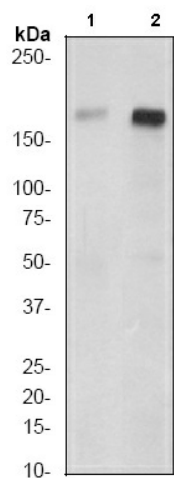


[View online »](#)

Protein Families: Druggable Genome

Protein Pathways: Insulin signaling pathway, mTOR signaling pathway, p53 signaling pathway

Product images:



Western blot - Tuberin (phospho S939) antibody [EP1062Y]; All lanes : Anti-Tuberin (phospho S939) antibody [EP1062Y] at 1/10000 dilution.Lane 1 : 3T3 cell lysate untreated.Lane 2 : 3T3 cell lysate treated with insulin.Lysates/proteins at 10 ug per lane.Secondary.goat anti-rabbit HRP at 1/2000 dilution.Predicted band size : 201 kDa.Observed band size : 180 kDa.