

Product datasheet for **TA303832**

Neurofilament (NEFM) Rabbit Monoclonal Antibody [Clone ID: EPR580(2)Y]

Product data:

Product Type:	Primary Antibodies
Clone Name:	EPR580(2)Y
Applications:	IHC, WB
Recommended Dilution:	WB: 1:500; IHC: 1:100 - 250; IP: 1:30
Reactivity:	Human
Modifications:	Phospho-specific
Host:	Rabbit
Isotype:	IgG
Clonality:	Monoclonal
Immunogen:	A synthetic phospho-peptide corresponding to residues surrounding Serine 614/619 of human NF-M was used as an immunogen.
Formulation:	pH: 7.40 Preservative: 0.01% Sodium azide Constituents: 50% Glycerol, 0.05% BSA
Purification:	Tissue culture supernatant
Conjugation:	Unconjugated
Storage:	Store at -20°C as received.
Stability:	Stable for 12 months from date of receipt.
Predicted Protein Size:	102 kDa
Gene Name:	neurofilament, medium polypeptide
Database Link:	NP_005373 Entrez Gene 4741 Human P07197



[View online »](#)

Background:

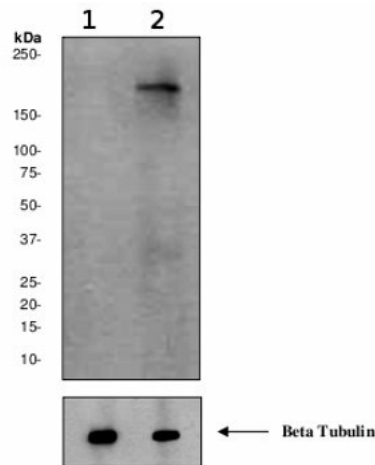
Neurofilaments are type IV intermediate filament heteropolymers composed of light, medium, and heavy chains. Neurofilaments comprise the axoskeleton and functionally maintain neuronal caliber. They may also play a role in intracellular transport to axons and dendrites. This gene encodes the medium neurofilament protein. This protein is commonly used as a biomarker of neuronal damage. Alternative splicing results in multiple transcript variants encoding distinct isoforms. [provided by RefSeq]

Synonyms:

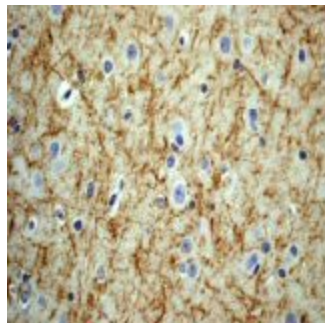
NEF3; NF-M; NFM

Protein Pathways:

Amyotrophic lateral sclerosis (ALS)

Product images:


Western blot - Anti-160 kD Neurofilament Medium (phospho S614 + S619) antibody [EPR580 (2)Y]; All lanes : Anti-160 kD Neurofilament Medium (phospho S614 + S619) antibody [EPR580 (2)Y] at 1/500 dilution. Lane 1 : SH-SY5Y cell lysate treated with Alkaline phosphatase. Lane 2 : Untreated SH-SY5Y cell lysate. Lysates/proteins at 10 ug per lane. Secondary. HRP conjugated Goat anti-rabbit at 1/2000 dilution. Predicted band size : 102 kDa. Observed band size : 160 kDa.



Immunohistochemistry (Formalin/PFA-fixed paraffin-embedded sections) - 160 kD Neurofilament Medium (phospho S614 + S619) antibody [EPR580 (2)Y]; Immunohistochemical analysis of paraffin-embedded human brain tissue using TA303832 at a dilution of 1/100 - 1/250