

## Product datasheet for **TA303799**

### Raptor (RPTOR) Rabbit Monoclonal Antibody [Clone ID: EP539Y]

#### Product data:

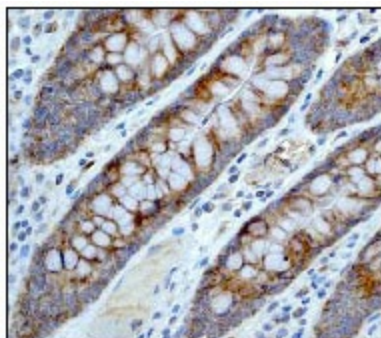
Product Type:	Primary Antibodies
Clone Name:	EP539Y
Applications:	IHC, WB
Recommended Dilution:	WB: 1:500; IP: 1:30; FC: 1:30; ICC/IF: 1:100 - 1:250; IHC-P: Use at an assay dependent dilution
Reactivity:	Mouse, Rat, Human
Host:	Rabbit
Isotype:	IgG
Clonality:	Monoclonal
Immunogen:	A synthetic peptide corresponding to residues near the C-terminus of human Raptor was used as immunogen.
Formulation:	PBS 49%, Sodium azide 0.01%, Glycerol 50%, BSA 0.05%
Purification:	Tissue culture supernatant
Conjugation:	Unconjugated
Storage:	Store at -20°C as received.
Stability:	Stable for 12 months from date of receipt.
Predicted Protein Size:	149 kDa
Gene Name:	regulatory associated protein of MTOR complex 1
Database Link:	<a href="#">NP_065812</a> <a href="#">Entrez Gene 74370 Mouse</a> <a href="#">Entrez Gene 287871 Rat</a> <a href="#">Entrez Gene 57521 Human</a> <a href="#">Q8N122</a>
Synonyms:	KOG1; Mip1
Protein Pathways:	Insulin signaling pathway, mTOR signaling pathway



[View online »](#)

**Product images:**

Western blot - Raptor antibody [EP539Y]; All lanes : Anti-Raptor antibody [EP539Y] at 1/500 dilution. Lane 1 : 293 cell lysate. Lane 2 : MCF-7 cell lysate. Lane 3 : HeLa cell lysate. Lane 4 : A431 cell lysate. Lysates/proteins at 10 ug per lane. Predicted band size : 149 kDa. Observed band size : 140 kDa. Additional bands at : 21 kDa, 37 kDa. We are unsure as to the identity of these extra bands.



Immunohistochemistry (Paraffin-embedded sections) - Raptor antibody [EP539Y]; Immunohistochemical analysis of paraffin-embedded human colon using anti-Raptor TA303799 at 1/50 dilution.