

## Product datasheet for **TA303794**

### **RANBP9 Rabbit Monoclonal Antibody [Clone ID: EP1353Y]**

#### **Product data:**

|                                |  |
|--------------------------------|--|
| <b>Product Type:</b>           | Primary Antibodies   |
| <b>Clone Name:</b>             | EP1353Y  |
| <b>Applications:</b>           | FC, IHC, WB  |
| <b>Recommended Dilution:</b>   | WB: 1:1000; IP: 1:20; FC: 1:1000; IHC-P: Use at an assay dependent concentration; ICC/IF: 1:100 - 1:250  |
| <b>Reactivity:</b>             | Mouse, Human (Does not react with: Rat)  |
| <b>Host:</b>                   | Rabbit   |
| <b>Isotype:</b>                | IgG  |
| <b>Clonality:</b>              | Monoclonal   |
| <b>Immunogen:</b>              | A synthetic peptide corresponding to residues on the C-terminus of human RANBP9 was used as an immunogen.  |
| <b>Formulation:</b>            | PBS 49%, Sodium azide 0.01%, Glycerol 50%, BSA 0.05%   |
| <b>Purification:</b>           | Tissue culture supernatant   |
| <b>Conjugation:</b>            | Unconjugated   |
| <b>Storage:</b>                | Store at -20°C as received.  |
| <b>Stability:</b>              | Stable for 12 months from date of receipt.   |
| <b>Predicted Protein Size:</b> | 115 kDa  |
| <b>Gene Name:</b>              | RAN binding protein 9  |
| <b>Database Link:</b>          | <a href="#">NP_005484</a><br><a href="#">Entrez Gene 56705 Mouse</a> <a href="#">Entrez Gene 364686 Rat</a> <a href="#">Entrez Gene 10048 Human</a><br><a href="#">Q96S59</a>  |
| <b>Background:</b>             | This gene encodes a protein that binds RAN, a small GTP binding protein belonging to the RAS superfamily that is essential for the translocation of RNA and proteins through the nuclear pore complex. The protein encoded by this gene has also been shown to interact with several other proteins, including met proto-oncogene, homeodomain interacting protein kinase 2, androgen receptor, and cyclin-dependent kinase 11. [provided by RefSeq] |
| <b>Synonyms:</b>               | BPM-L; BPM90; RanBP7; RANBPM   |

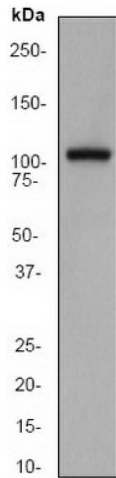


[View online »](#)

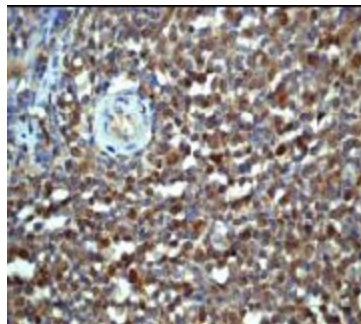
**Note:** Does not react with Rat

**Protein Families:** Druggable Genome

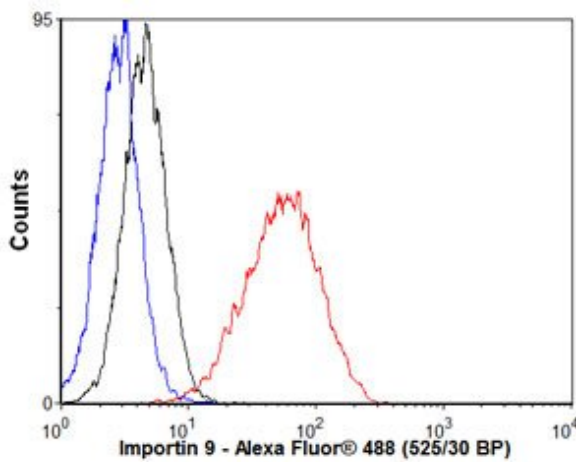
**Product images:**



Western blot - RanBP9 antibody [EP1353Y]; Anti-Importin 9 antibody [EP1353Y] at 1/1000 dilution + Fetal brain lysate at 10 ug.Secondary.HRP-labelled goat anti-rabbit. at 1/2000 dilution.Predicted band size : 115 kDa.



Immunohistochemistry (Paraffin-embedded sections) - RanBP9 antibody [EP1353Y]; Immunohistochemical staining of paraffin-embedded human lymphoma using TA303794 at a dilution of 1/50.



Flow Cytometry - Anti-Importin 9 antibody; Overlay histogram showing HeLa cells stained with TA303794 (red line). The secondary antibody used was Alexa Fluor 488 goat anti-rabbit IgG (H+L) at 1:2000. Isotype control antibody (black line) was rabbit IgG (monoclonal) used under the same conditions. Unlabelled sample (blue line) was also used as a control.