

## Product datasheet for **TA303762**

### MAPKAP Kinase 2 (MAPKAPK2) Rabbit Monoclonal Antibody [Clone ID: E341]

#### Product data:

Product Type:	Primary Antibodies
Clone Name:	E341
Applications:	WB
Recommended Dilution:	WB: 1:500-1,000; IP: 1:200
Reactivity:	Mouse, Rat, Human
Host:	Rabbit
Isotype:	IgG
Clonality:	Monoclonal
Immunogen:	A synthetic peptide corresponding to residues near C-terminus of human MAPKAP Kinase-2 was used as immunogen.
Formulation:	PBS 49%, Sodium azide 0.01%, Glycerol 50%, BSA 0.05%
Purification:	IgG fraction
Conjugation:	Unconjugated
Storage:	Store at -20°C as received.
Stability:	Stable for 12 months from date of receipt.
Predicted Protein Size:	46 kDa
Gene Name:	mitogen-activated protein kinase-activated protein kinase 2
Database Link:	<a href="#">NP_004750</a> <a href="#">Entrez Gene 17164 Mouse</a> <a href="#">Entrez Gene 289014 Rat</a> <a href="#">Entrez Gene 9261 Human</a> <a href="#">P49137</a>
Background:	This gene encodes a member of the Ser/Thr protein kinase family. This kinase is regulated through direct phosphorylation by p38 MAP kinase. In conjunction with p38 MAP kinase, this kinase is known to be involved in many cellular processes including stress and inflammatory responses, nuclear export, gene expression regulation and cell proliferation. Heat shock protein HSP27 was shown to be one of the substrates of this kinase in vivo. Two transcript variants encoding two different isoforms have been found for this gene. [provided by RefSeq]
Synonyms:	MAPKAP-K2; MK-2; MK2

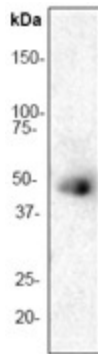


[View online »](#)

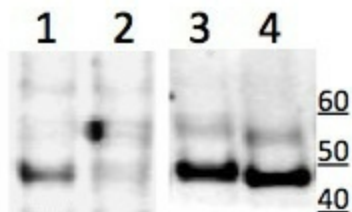
**Protein Families:** Druggable Genome, Protein Kinase

**Protein Pathways:** MAPK signaling pathway, Neurotrophin signaling pathway, VEGF signaling pathway

**Product images:**



Western blot - MAPKAP Kinase 2 antibody [E341]; Anti-MAPKAP Kinase 2 antibody [E341] at 1/1000 dilution + HeLa cell lysate. Predicted band size : 46 kDa. Observed band size : 46 kDa.



Western blot - Anti-MAPKAP Kinase 2 antibody; Lanes 1 - 2 : Anti-MAPKAP Kinase 2 (phospho T334) antibody at 1:500. Lanes 3 - 4 : Anti-MAPKAP Kinase 2 antibody at 1:500. Lane 1 : UV treated HeLa cells. Lane 2 : UV treated HeLa cells + p38 inhibitor. Lane 3 : UV treated HeLa cells. Lane 4 : UV treated HeLa cells + p38 inhibitor. Secondary: IRDye 680 LICOR goat anti-rabbit. Performed under reducing conditions.