

Product datasheet for **TA303679**

RAF1 Rabbit Monoclonal Antibody [Clone ID: Y198]

Product data:

Product Type:	Primary Antibodies
Clone Name:	Y198
Applications:	IHC, WB
Recommended Dilution:	WB: 1:500; IHC: 1:50-100; ICC: 1:50; IP: 1:100
Reactivity:	Mouse, Rat, Human
Host:	Rabbit
Isotype:	IgG
Clonality:	Monoclonal
Immunogen:	A synthetic peptide corresponding to residues surrounding Serine 338-339 of human Raf was used as immunogen.
Formulation:	PBS 49%, Sodium azide 0.01%, Glycerol 50%, BSA 0.05%
Purification:	Protein A purified
Conjugation:	Unconjugated
Storage:	Store at -20°C as received.
Stability:	Stable for 12 months from date of receipt.
Predicted Protein Size:	73 kDa
Gene Name:	Raf-1 proto-oncogene, serine/threonine kinase
Database Link:	NP_002871 Entrez Gene 24703 Rat Entrez Gene 110157 Mouse Entrez Gene 5894 Human P04049



[View online »](#)

Background:

This gene is the cellular homolog of viral raf gene (v-raf). The encoded protein is a MAP kinase kinase kinase (MAP3K), which functions downstream of the Ras family of membrane associated GTPases to which it binds directly. Once activated, the cellular RAF1 protein can phosphorylate to activate the dual specificity protein kinases MEK1 and MEK2, which in turn phosphorylate to activate the serine/threonine specific protein kinases, ERK1 and ERK2. Activated ERKs are pleiotropic effectors of cell physiology and play an important role in the control of gene expression involved in the cell division cycle, apoptosis, cell differentiation and cell migration. Mutations in this gene are associated with Noonan syndrome 5 and LEOPARD syndrome 2. [provided by RefSeq]

Synonyms:

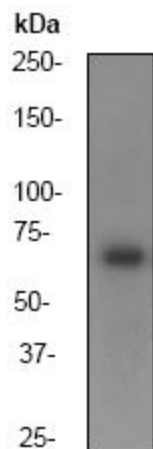
c-Raf; CMD1NN; CRAF; NS5; Raf-1

Protein Families:

Druggable Genome, Protein Kinase

Protein Pathways:

Acute myeloid leukemia, B cell receptor signaling pathway, Bladder cancer, Chemokine signaling pathway, Chronic myeloid leukemia, Colorectal cancer, Endometrial cancer, ErbB signaling pathway, Fc epsilon RI signaling pathway, Fc gamma R-mediated phagocytosis, Focal adhesion, Gap junction, Glioma, GnRH signaling pathway, Insulin signaling pathway, Long-term depression, Long-term potentiation, MAPK signaling pathway, Melanogenesis, Melanoma, Natural killer cell mediated cytotoxicity, Neurotrophin signaling pathway, Non-small cell lung cancer, Pancreatic cancer, Pathways in cancer, Progesterone-mediated oocyte maturation, Prostate cancer, Regulation of actin cytoskeleton, Renal cell carcinoma, T cell receptor signaling pathway, Vascular smooth muscle contraction, VEGF signaling pathway

Product images:

Western blot - Raf1 antibody [Y198]; Anti-Raf1 antibody [Y198] at 1/500 dilution + NIH 3T3 cell lysate. Predicted band size : 73 kDa. Observed band size : 74 kDa.

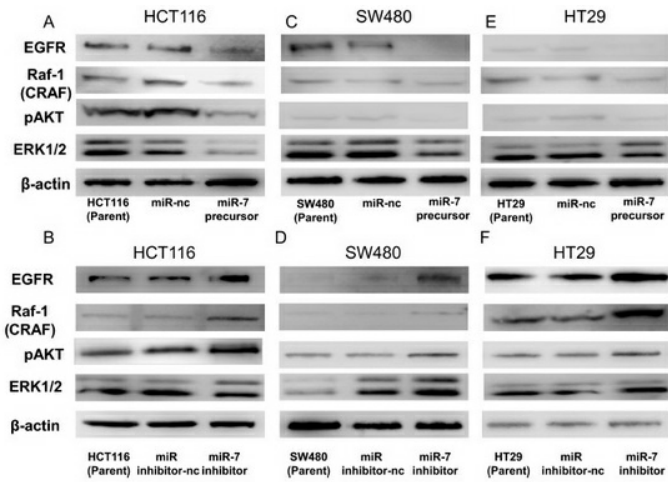
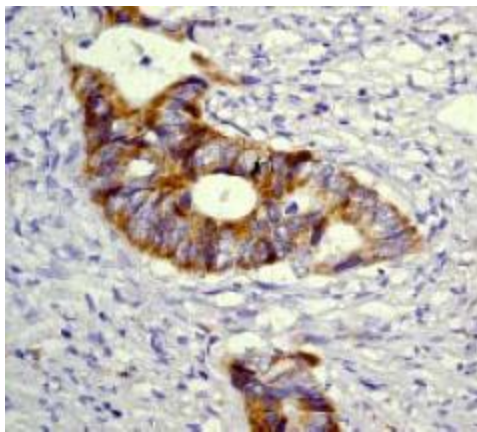


Figure from citation: Western blot analysis of RAF-1 protein expression by using anti-RAF1 antibody in miR-7 precursor transfected HCT116 cells (A), SW480 cells (C) and HT29 cells (E) or in miR-7 inhibitor-transfected HCT116 cells (B), SW480 cells (D) and HT29 cells (F). Dilution: 1:1000 [View Citation](#)



Immunohistochemistry (Paraffin-embedded sections) - Raf1 antibody [Y198]; TA303679, at a 1/100 dilution, staining human Raf1 in colon carcinoma by Immunohistochemistry, Paraffin embedded tissue