

Product datasheet for **TA303639**

PIK3CD Rabbit Monoclonal Antibody [Clone ID: Y387]

Product data:

Product Type:	Primary Antibodies
Clone Name:	Y387
Applications:	IF, WB
Recommended Dilution:	WB: 1:500; ICC: 1:250-500; IP: 1:50
Reactivity:	Human (Does not react with: Mouse, Rat)
Host:	Rabbit
Isotype:	IgG
Clonality:	Monoclonal
Immunogen:	A synthetic peptide of human PI3-K p110 delta was used as an immunogen.
Formulation:	PBS 49%, Sodium azide 0.01%, Glycerol 50%, BSA 0.05%
Purification:	IgG fraction
Conjugation:	Unconjugated
Storage:	Store at -20°C as received.
Stability:	Stable for 12 months from date of receipt.
Predicted Protein Size:	119 kDa
Gene Name:	phosphatidylinositol-4,5-bisphosphate 3-kinase catalytic subunit delta
Database Link:	NP_005017 Entrez Gene 18707 Mouse Entrez Gene 366508 Rat Entrez Gene 5293 Human O00329
Background:	Phosphoinositide 3-kinases (PI3Ks) phosphorylate the 3-prime OH position of the inositol ring of inositol lipids. See MIM 602838. The class I PI3Ks display a broad phosphoinositide lipid substrate specificity and include p110-alpha (MIM 171834), p110-beta (MIM 602925), and p110-gamma (MIM 601232). p110-alpha and p110-beta interact with SH2/SH3-domain-containing p85 adaptor proteins (see MIM 171833) and with GTP-bound Ras. [supplied by OMIM]
Synonyms:	APDS; IMD14; p110D; P110DELTA; PI3K
Note:	Does not react with Mouse, Rat



[View online »](#)

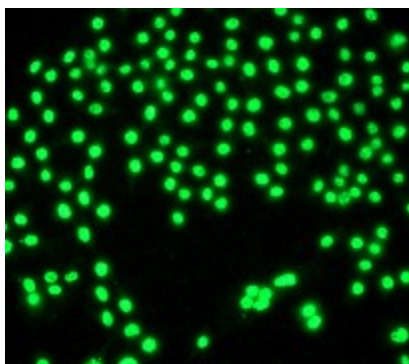
Protein Families: Druggable Genome

Protein Pathways: Acute myeloid leukemia, Apoptosis, B cell receptor signaling pathway, Chemokine signaling pathway, Chronic myeloid leukemia, Colorectal cancer, Endometrial cancer, ErbB signaling pathway, Fc epsilon RI signaling pathway, Fc gamma R-mediated phagocytosis, Focal adhesion, Glioma, Inositol phosphate metabolism, Insulin signaling pathway, Jak-STAT signaling pathway, Leukocyte transendothelial migration, Melanoma, mTOR signaling pathway, Natural killer cell mediated cytotoxicity, Neurotrophin signaling pathway, Non-small cell lung cancer, Pancreatic cancer, Pathways in cancer, Phosphatidylinositol signaling system, Progesterone-mediated oocyte maturation, Prostate cancer, Regulation of actin cytoskeleton, Renal cell carcinoma, Small cell lung cancer, T cell receptor signaling pathway, Toll-like receptor signaling pathway, Type II diabetes mellitus, VEGF signaling pathway

Product images:



Western blot - PI 3 Kinase p110 delta antibody [Y387]; Anti-PI 3 Kinase p110 delta antibody [Y387] at 1/500 dilution + Jurkat cell lysate. Predicted band size : 119 kDa. Observed band size : 110 kDa.



Immunocytochemistry/ Immunofluorescence - PI 3 Kinase p110 delta antibody [Y387]; Immunofluorescent staining of HeLa cells using TA303639 at 1/250 dilution.