

Product datasheet for **TA303592**

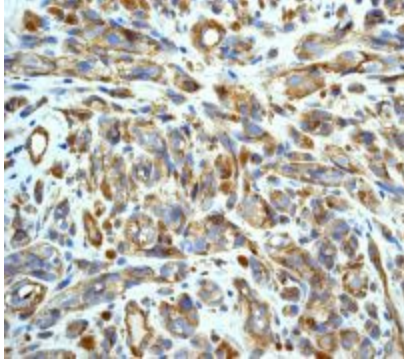
CD146 (MCAM) Rabbit Monoclonal Antibody [Clone ID: EPR3208]

Product data:

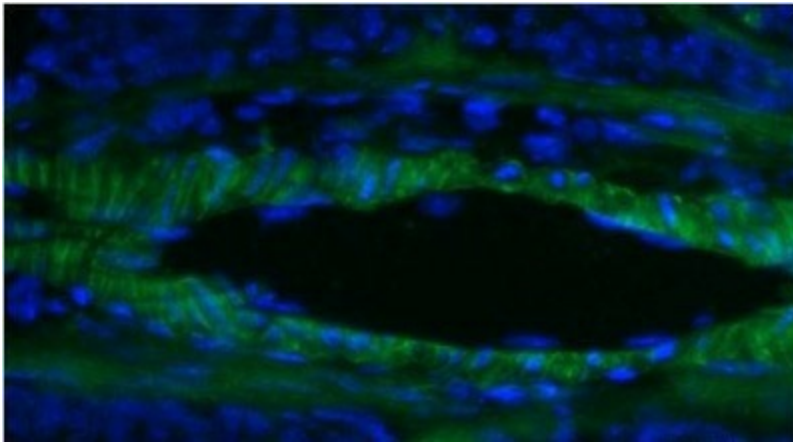
Product Type:	Primary Antibodies
Clone Name:	EPR3208
Applications:	IF, IHC
Recommended Dilution:	ICC/IF: Use at an assay dependent dilution; IHC-Fr: 1:250; WB: 1:10000 - 1:50000; IP: 1:10; IHC-P: 1:250 - 1:500; ICC: 1:100 - 1:250; FC: 1:80
Reactivity:	Mouse, Rat, Human
Host:	Rabbit
Isotype:	IgG
Clonality:	Monoclonal
Immunogen:	A synthetic peptide corresponding to residues in human CD146 was used as an immunogen.
Formulation:	PBS 49%, Sodium azide 0.01%, Glycerol 50%, BSA 0.05%
Purification:	Tissue culture supernatant
Conjugation:	Unconjugated
Storage:	Store at -20°C as received.
Stability:	Stable for 12 months from date of receipt.
Predicted Protein Size:	72 kDa
Gene Name:	melanoma cell adhesion molecule
Database Link:	NP_006491 Entrez Gene 78967 Rat Entrez Gene 84004 Mouse Entrez Gene 4162 Human P43121
Synonyms:	CD146; MUC18
Protein Families:	Druggable Genome, ES Cell Differentiation/IPS, Transmembrane



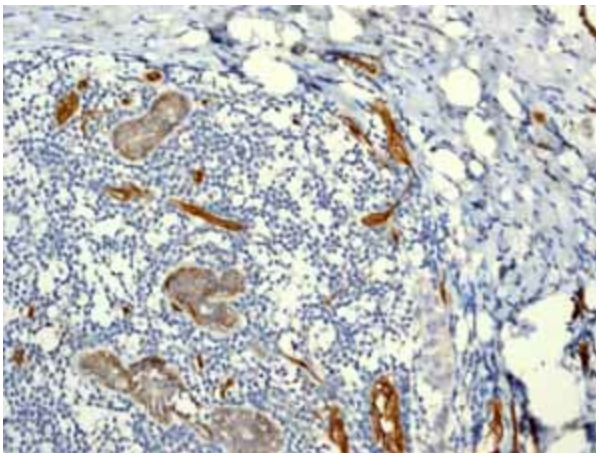
[View online »](#)

Product images:

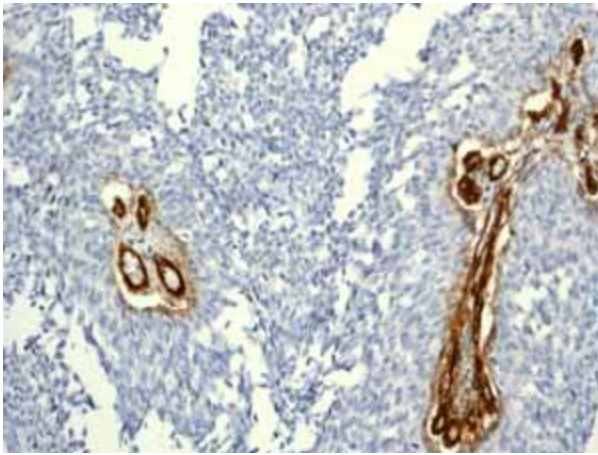
Immunohistochemistry (Formalin/PFA-fixed paraffin-embedded sections) - CD146 antibody [EPR3208]; TA303592 at 1/250 dilution staining CD146 in melanoma tissue, using a HRP/AP polymerized secondary antibody.



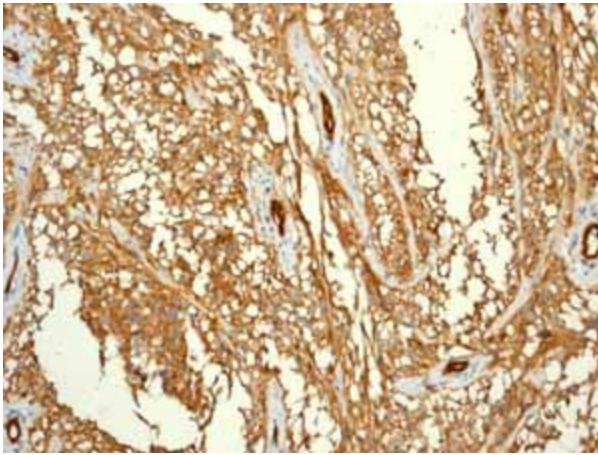
Immunohistochemistry (Frozen sections) - CD146 antibody [EPR3208]; TA303592 staining CD146 in mouse spleen tissue sections by IHC-Fr (Frozen sections). Tissue samples were fixed with acetone and blocked with 5% serum for 2 hours at 25°C. The sample was incubated with primary antibody (1/250 in PBS-Tween) at 4°C for 12 hours. An Alexa Fluor488-conjugated Goat polyclonal to rabbit IgG (1/250) was used as secondary antibody. Nuclear staining was with DAPI.



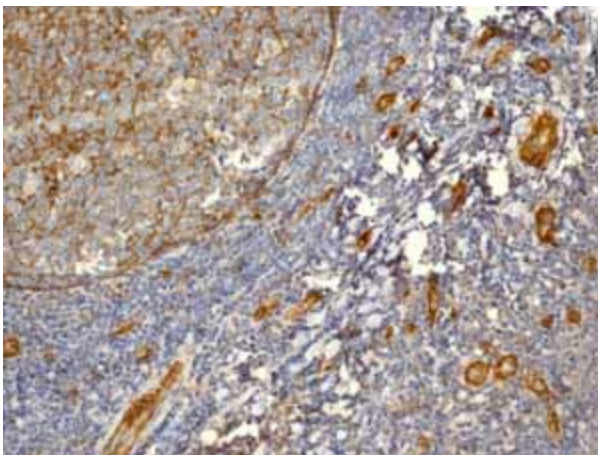
Immunohistochemistry (Formalin/PFA-fixed paraffin-embedded sections)-Anti-CD146 antibody [EPR3208] (TA303592); TA303592 showing positive staining in Breast carcinoma vessels tissue.



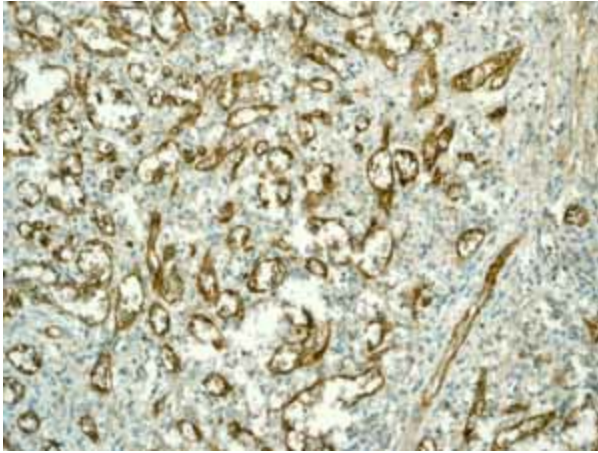
Immunohistochemistry (Formalin/PFA-fixed paraffin-embedded sections)-Anti-CD146 antibody [EPR3208] (TA303592); TA303592 showing positive staining in Urinary bladder transitional carcinoma vessels tissue.



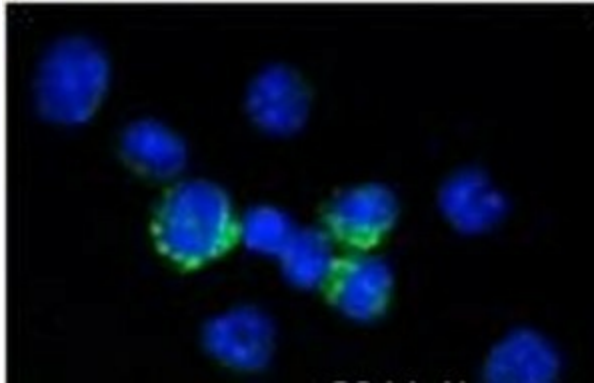
Immunohistochemistry (Formalin/PFA-fixed paraffin-embedded sections)-Anti-CD146 antibody [EPR3208] (TA303592); TA303592 showing positive staining in Glioma vessels tissue.



Immunohistochemistry (Formalin/PFA-fixed paraffin-embedded sections)-Anti-CD146 antibody [EPR3208] (TA303592); TA303592 showing positive staining in Normal tonsil tissue.



Immunohistochemistry (Formalin/PFA-fixed paraffin-embedded sections)-Anti-CD146 antibody [EPR3208] (TA303592); TA303592 showing positive staining in Normal spleen tissue.



Immunocytochemistry/ Immunofluorescence - CD146 antibody [EPR3208]; TA303592 staining CD146 in murine bone marrow cells by Immunocytochemistry/ Immunofluorescence. The cells were fixed in methanol and then blocked using 5% serum for 2 hours at 25°C. Samples were then incubated with the primary antibody at 1/250 for 12 hours at 4°C. The secondary antibody used was a goat anti-rabbit IgG conjugated to Alexa Fluor 488 (green) used at a 1/500 dilution. Counterstained with DAPI.