

Product datasheet for **TA303540**

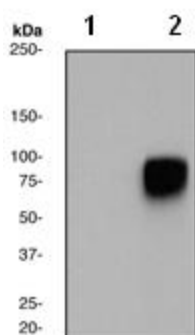
HSF1 Rabbit Monoclonal Antibody [Clone ID: EP1713Y]

Product data:

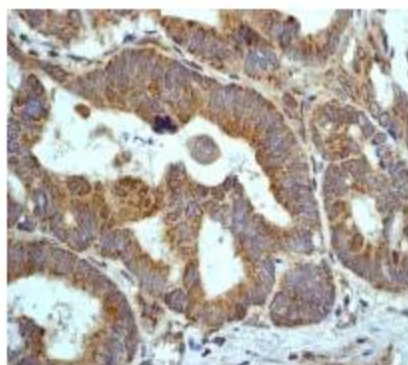
Product Type:	Primary Antibodies
Clone Name:	EP1713Y
Applications:	FC, IHC, WB
Recommended Dilution:	WB: 1:5000 - 1:10000; IP: 1:80; ICC: 1:250 - 1:500; FC: 1:1000; IHC-P: 1:100 - 1:250
Reactivity:	Human (Does not react with: Mouse, Rat)
Modifications:	Phospho-specific
Host:	Rabbit
Isotype:	IgG
Clonality:	Monoclonal
Immunogen:	A phospho specific peptide corresponding to residues surrounding Ser326 of human HSF1 was used as an immunogen. This antibody detects HSF1 phosphorylated on Ser326.
Formulation:	PBS 49%, Sodium azide 0.01%, Glycerol 50%, BSA 0.05%
Purification:	Tissue culture supernatant
Conjugation:	Unconjugated
Storage:	Store at -20°C as received.
Stability:	Stable for 12 months from date of receipt.
Predicted Protein Size:	57 kDa
Gene Name:	heat shock transcription factor 1
Database Link:	NP_005517 Entrez Gene 15499 Mouse Entrez Gene 79245 Rat Entrez Gene 3297 Human Q00613
Background:	The product of this gene is a heat-shock transcription factor. Transcription of heat-shock genes is rapidly induced after temperature stress. Hsp90, by itself and/or associated with multichaperone complexes, is a major repressor of this gene. [provided by RefSeq]
Synonyms:	HSTF1
Note:	Does not react with Mouse, Rat
Protein Families:	Transcription Factors



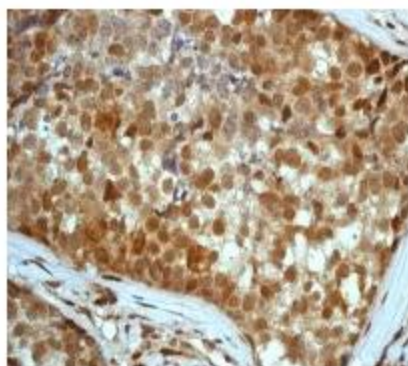
[View online »](#)

Product images:

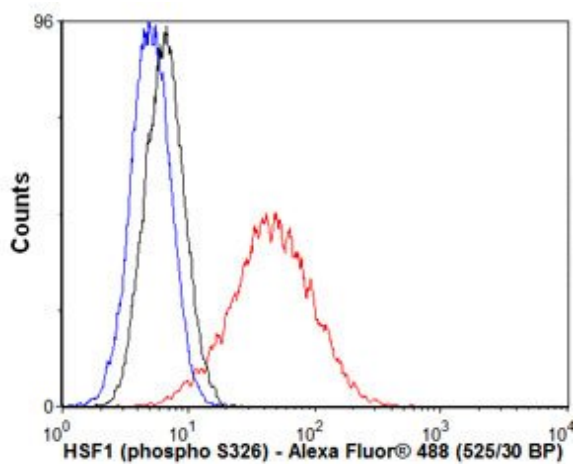
Western blot - HSF1 (phospho S326) antibody [EP1713Y]; All lanes : Anti-HSF1 (phospho S326) antibody [EP1713Y] at 1/10000 dilution. Lane 1 : HeLa cell lysates (untreated). Lane 2 : HeLa cell lysates, treated with heat (44o C). Lysates/proteins at 10 ug per lane. Secondary. Goat anti-rabbit HRP at 1/1000 dilution. Predicted band size : 57 kDa. Observed band size : 82 kDa.



Immunohistochemistry (Formalin/PFA-fixed paraffin-embedded sections) - HSF1 (phospho S326) antibody [EP1713Y]; Immunohistochemical analysis of paraffin-embedded human stomach using TA303540, at 1/100 dilution.



Immunohistochemistry (Formalin/PFA-fixed paraffin-embedded sections) - HSF1 (phospho S326) antibody [EP1713Y]; Immunohistochemical analysis of paraffin-embedded human breast carcinoma, using TA303540, at 1/100 dilution.



Flow Cytometry - Anti-HSF1 (phospho S326) antibody; Overlay histogram showing HeLa cells stained with TA303540 (red line). The secondary antibody used was Alexa Fluor 488 goat anti-rabbit IgG (H+L) at 1:2000. Isotype control antibody (black line) was rabbit IgG (monoclonal) used under the same conditions. Unlabelled sample (blue line) was also used as a control. This antibody gave a positive signal in HeLa cells under the same conditions.