

## Product datasheet for **TA303519**

### PSMA (FOLH1) Rabbit Monoclonal Antibody [Clone ID: EP3253]

#### Product data:

Product Type:	Primary Antibodies
Clone Name:	EP3253
Applications:	WB
Recommended Dilution:	WB: 1:1000 - 1:5000; IP: 1:10; FC: 1:60
Reactivity:	Human (Does not react with: Mouse, Rat)
Host:	Rabbit
Isotype:	IgG
Clonality:	Monoclonal
Immunogen:	A synthetic peptide corresponding to residues near the N-terminus of human PSMA was used as an immunogen.
Formulation:	PBS 49%, Sodium azide 0.01%, Glycerol 50%, BSA 0.05%
Conjugation:	Unconjugated
Storage:	Store at -20°C as received.
Stability:	Stable for 12 months from date of receipt.
Gene Name:	folate hydrolase (prostate-specific membrane antigen) 1
Database Link:	<a href="#">NP_001014986</a> <a href="#">Entrez Gene 53320 Mouse</a> <a href="#">Entrez Gene 85309 Rat</a> <a href="#">Entrez Gene 2346 Human</a> <a href="#">Q04609</a>

**Background:** This gene encodes a type II transmembrane glycoprotein belonging to the M28 peptidase family. The protein acts as a glutamate carboxypeptidase on different alternative substrates, including the nutrient folate and the neuropeptide N-acetyl-L-aspartyl-L-glutamate and is expressed in a number of tissues such as prostate, central and peripheral nervous system and kidney. A mutation in this gene may be associated with impaired intestinal absorption of dietary folates, resulting in low blood folate levels and consequent hyperhomocysteinemia. Expression of this protein in the brain may be involved in a number of pathological conditions associated with glutamate excitotoxicity. In the prostate the protein is up-regulated in cancerous cells and is used as an effective diagnostic and prognostic indicator of prostate cancer. This gene likely arose from a duplication event of a nearby chromosomal region. Alternative splicing gives rise to multiple transcript variants. [provided by RefSeq]



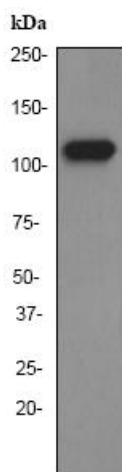
[View online »](#)

**Synonyms:** FGCP; FOLH; GCP2; GCPII; mGCP; NAALAD1; NAALAdase; PSM; PSMA

**Note:** Is unsuitable for IHC-P.

**Protein Families:** Druggable Genome, Protease, Transmembrane

### Product images:



Western blot - PSMA antibody [EP3253]; Anti-PSMA antibody [EP3253] at 1/5000 dilution + LnCaP cell lysate at 10 ug.Secondary.HRP labelled goat anti-rabbit at 1/1000 dilution.Predicted band size : 84 kDa.Observed band size : 110 kDa.