

Product datasheet for **TA303505**

ErbB 4 (ERBB4) Rabbit Monoclonal Antibody [Clone ID: EP2272AY]

Product data:

Product Type:	Primary Antibodies
Clone Name:	EP2272AY
Applications:	WB
Recommended Dilution:	WB: 1:1000 - 1:5000
Reactivity:	Mouse, Rat, Human
Modifications:	Phospho-specific
Host:	Rabbit
Isotype:	IgG
Clonality:	Monoclonal
Immunogen:	A phospho specific peptide corresponding to residues surrounding tyrosine 1258 of human Her4/ErbB-4 was used as an immunogen. This antibody detects Her4/ErbB-4 phosphorylated on tyrosine 1258.
Formulation:	PBS 49%,Sodium azide 0.01%,Glycerol 50%,BSA 0.05%
Purification:	Tissue culture supernatant
Conjugation:	Unconjugated
Storage:	Store at -20°C as received.
Stability:	Stable for 12 months from date of receipt.
Predicted Protein Size:	147 kDa
Gene Name:	erb-b2 receptor tyrosine kinase 4
Database Link:	NP_005226 Entrez Gene 13869 Mouse Entrez Gene 59323 Rat Entrez Gene 2066 Human Q15303



[View online »](#)

Background:

This gene is a member of the Tyr protein kinase family and the epidermal growth factor receptor subfamily. It encodes a single-pass type I membrane protein with multiple cysteine rich domains, a transmembrane domain, a tyrosine kinase domain, a phosphatidylinositol-3 kinase binding site and a PDZ domain binding motif. The protein binds to and is activated by neuregulins and other factors and induces a variety of cellular responses including mitogenesis and differentiation. Multiple proteolytic events allow for the release of a cytoplasmic fragment and an extracellular fragment. Mutations in this gene have been associated with cancer. Alternatively spliced variants which encode different protein isoforms have been described; however, not all variants have been fully characterized. [provided by RefSeq]

Synonyms:

ALS19; HER4; p180erbB4

Note:

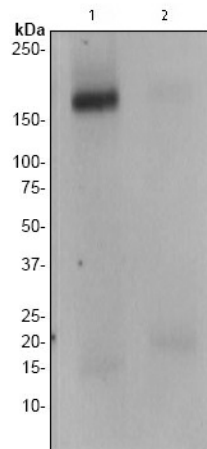
Is unsuitable for Flow Cyt, ICC, IHC-P or IP.

Protein Families:

Druggable Genome, Protein Kinase, Transmembrane

Protein Pathways:

Calcium signaling pathway, Endocytosis, ErbB signaling pathway

Product images:

Western blot - ErbB 4 (phospho Y1258) antibody [EP2272AY]; All lanes : Anti-ErbB 4 (phospho Y1258) antibody [EP2272AY] at 1/2000 dilution. Lane 1 : SKBR3 cell lysates treated with EGF. Lane 2 : SKBR3 cell lysates untreated. Lysates/proteins at 10 ug per lane. Secondary. HRP labelled goat anti-rabbit at 1/2000 dilution. Predicted band size : 147 kDa. Observed band size : 180 kDa.