

Product datasheet for **TA303500**

ErbB 3 (ERBB3) Rabbit Monoclonal Antibody [Clone ID: EPR2325]

Product data:

Product Type:	Primary Antibodies
Clone Name:	EPR2325
Applications:	IF, WB
Recommended Dilution:	WB: 1:2500 - 1:5000; ICC/IF: 1:100
Reactivity:	Human (Does not react with: Mouse, Rat)
Modifications:	Phospho-specific
Host:	Rabbit
Isotype:	IgG
Clonality:	Monoclonal
Immunogen:	A phospho-specific peptide corresponding to residues surrounding Tyrosine 1289 of human HER3/ErbB3 was used as an immunogen. The antibody only detects HER3/ErbB3 phosphorylated on Tyrosine 1289.
Formulation:	PBS 49%, Sodium azide 0.01%, Glycerol 50%, BSA 0.05%
Conjugation:	Unconjugated
Storage:	Store at -20°C as received.
Stability:	Stable for 12 months from date of receipt.
Gene Name:	erb-b2 receptor tyrosine kinase 3
Database Link:	NP_001973 Entrez Gene 13867 Mouse Entrez Gene 29496 Rat Entrez Gene 2065 Human P21860



[View online »](#)

Background:

This gene encodes a member of the epidermal growth factor receptor (EGFR) family of receptor tyrosine kinases. This membrane-bound protein has a neuregulin binding domain but not an active kinase domain. It therefore can bind this ligand but not convey the signal into the cell through protein phosphorylation. However, it does form heterodimers with other EGF receptor family members which do have kinase activity. Heterodimerization leads to the activation of pathways which lead to cell proliferation or differentiation. Amplification of this gene and/or overexpression of its protein have been reported in numerous cancers, including prostate, bladder, and breast tumors. Alternate transcriptional splice variants encoding different isoforms have been characterized. One isoform lacks the intermembrane region and is secreted outside the cell. This form acts to modulate the activity of the membrane-bound form. Additional splice variants have also been reported, but they have not been thoroughly characterized. [provided by RefSeq]

Synonyms:

c-erbB-3; c-erbB3; ErbB-3; erbB3-S; HER3; LCCS2; MDA-BF-1; p45-sErbB3; p85-sErbB3; p180-ErbB3

Note:

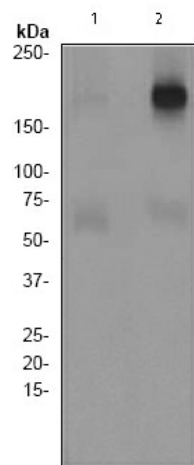
Is unsuitable for Flow Cyt, IHC-P or IP.

Protein Families:

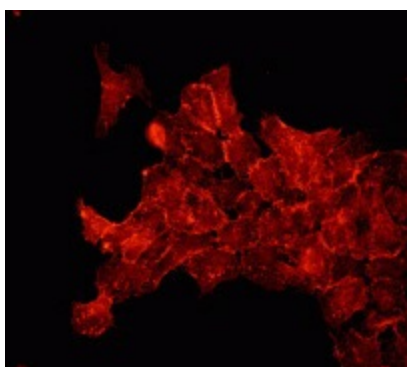
Adult stem cells, Druggable Genome, Protein Kinase, Secreted Protein, Stem cell - Pluripotency, Transmembrane

Protein Pathways:

Calcium signaling pathway, Endocytosis, ErbB signaling pathway

Product images:

Western blot - ErbB 3 (phospho Y1289) antibody [EPR2325]; All lanes : Anti-ErbB 3 (phospho Y1289) antibody [EPR2325] at 1/5000 dilution. Lane 1 : SKBR3 cell lysate untreated. Lane 2 : SKBR3 cell lysate treated with Neuregulin. Lysates/proteins at 10 ug per lane. Secondary. HRP labelled goat anti-rabbit at 1/2000 dilution. Predicted band size : 148 kDa. Observed band size : 185 kDa.



Immunocytochemistry/ Immunofluorescence -
ErbB 3 (phospho Y1289) antibody [EPR2325];
Immunofluorescent staining of MCF7 cells using
TA303500 at 1/100 dilution.