

Product datasheet for **TA303434**

CDC25C Rabbit Monoclonal Antibody [Clone ID: E302]

Product data:

Product Type:	Primary Antibodies
Clone Name:	E302
Applications:	FC, IHC, WB
Recommended Dilution:	WB: 1:5000; IHC-P: 1:250 - 1:500; ICC/IF: 1:250; FC: Use at an assay dependent dilution; IP: 1:80
Reactivity:	Rat, Human (Does not react with: Mouse)
Host:	Rabbit
Isotype:	IgG
Clonality:	Monoclonal
Immunogen:	A synthetic peptide corresponding to residues near N-terminus of human Cdc25C was used as immunogen. The antibody can also detect splice isoform 2, 4 and 5 of human Cdc25C, based on sequence homology.
Formulation:	PBS 49%,Sodium azide 0.01%,Glycerol 50%,BSA 0.05%
Conjugation:	Unconjugated
Storage:	Store at -20°C as received.
Stability:	Stable for 12 months from date of receipt.
Predicted Protein Size:	53 kDa
Gene Name:	cell division cycle 25C
Database Link:	NP_001781 Entrez Gene 12532 Mouse Entrez Gene 307511 Rat Entrez Gene 995 Human P30307
Background:	This gene is highly conserved during evolution and it plays a key role in the regulation of cell division. The encoded protein is a tyrosine phosphatase and belongs to the Cdc25 phosphatase family. It directs dephosphorylation of cyclin B-bound CDC2 and triggers entry into mitosis. It is also thought to suppress p53-induced growth arrest. Multiple alternatively spliced transcript variants of this gene have been described, however, the full-length nature of many of them is not known. [provided by RefSeq]
Synonyms:	CDC25; PPP1R60



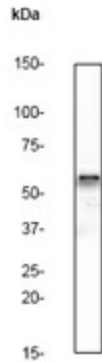
[View online »](#)

Note: Does not react with Mouse, Rat

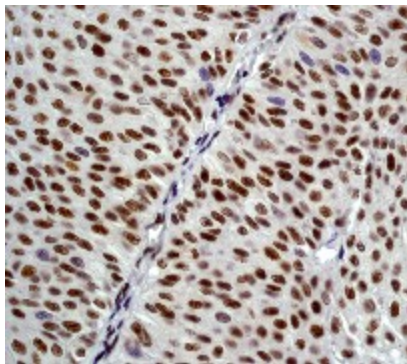
Protein Families: Druggable Genome, Phosphatase, Stem cell - Pluripotency

Protein Pathways: Cell cycle, Oocyte meiosis, Progesterone-mediated oocyte maturation

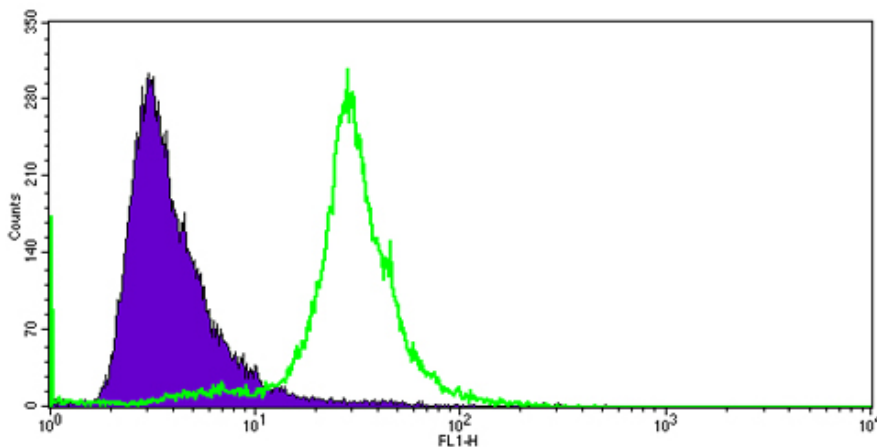
Product images:



Western blot - Cdc25C antibody [E302]; Anti-Cdc25C antibody [E302] at 1/5000 dilution + HeLa cell lysate. Predicted band size : 53 kDa. Observed band size : 60 kDa.



Immunohistochemistry (Paraffin-embedded sections) - Cdc25C antibody [E302]; Immunohistochemical analysis of paraffin-embedded human urinary bladder carcinoma TA303434 at 1/250 dilution.



Flow Cytometry - Anti-Cdc25C antibody [E302]; Flow cytometry analysis of HeLa cells, staining Cdc25C with TA303434. Cells were fixed with formaldehyde and permeabilized with 90% methanol. Samples were incubated with primary antibody (1/20 in PBS + 10% goat serum) for 1 hour at 23°C. A FITC-conjugated goat anti-rabbit polyclonal IgG (1/1000) was used as the secondary antibody.