

Product datasheet for **TA303378**

ACTC1 Rabbit Monoclonal Antibody [Clone ID: EP184E]

Product data:

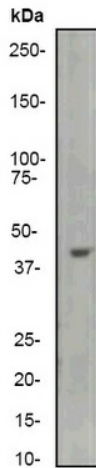
Product Type:	Primary Antibodies
Clone Name:	EP184E
Applications:	FC, IF, IHC, WB
Recommended Dilution:	WB: 1:1,000; IHC: 1:100 200; ICC: 1:250 500; FC: 1:20; IP: 1:20
Reactivity:	Mouse, Rat, Human, Cow
Host:	Rabbit
Isotype:	IgG
Clonality:	Monoclonal
Immunogen:	A synthetic peptide corresponding to residues near the N-terminus of human Actin was used as an immunogen. This Actin antibody recognizes all muscle actin.
Formulation:	PBS 49%, Sodium azide 0.01%, Glycerol 50%, BSA 0.05%
Purification:	Tissue culture supernatant
Conjugation:	Unconjugated
Storage:	Store at -20°C as received.
Stability:	Stable for 12 months from date of receipt.
Predicted Protein Size:	42 kDa
Gene Name:	actin, alpha, cardiac muscle 1
Database Link:	NP_005150 Entrez Gene 11464 Mouse Entrez Gene 29275 Rat Entrez Gene 70 Human P68032
Background:	Actins are highly conserved proteins that are involved in various types of cell motility. Polymerization of globular actin (G-actin) leads to a structural filament (F-actin) in the form of a two-stranded helix. Each actin can bind to four others. The protein encoded by this gene belongs to the actin family which is comprised of three main groups of actin isoforms, alpha, beta, and gamma. The alpha actins are found in muscle tissues and are a major constituent of the contractile apparatus. Defects in this gene have been associated with idiopathic dilated cardiomyopathy (IDC) and familial hypertrophic cardiomyopathy (FHC). [provided by RefSeq]
Synonyms:	ACTC; ASD5; CMD1R; CMH11; LVNC4



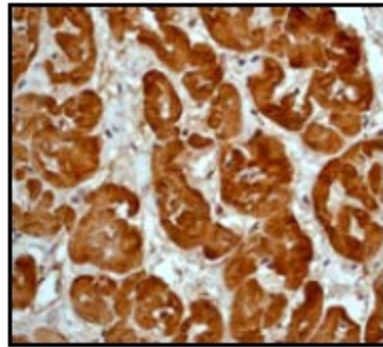
[View online »](#)

Protein Pathways: Cardiac muscle contraction, Dilated cardiomyopathy, Hypertrophic cardiomyopathy (HCM)

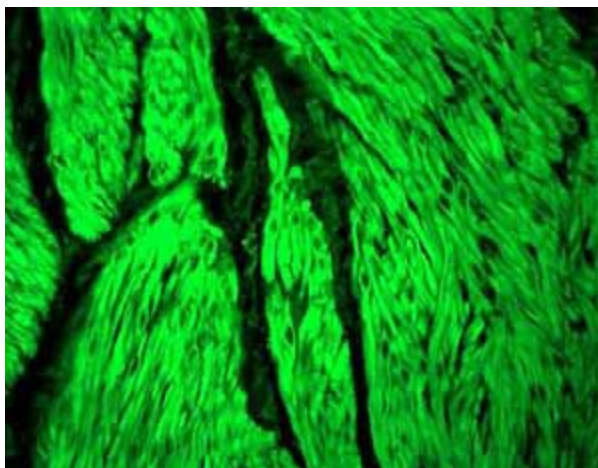
Product images:



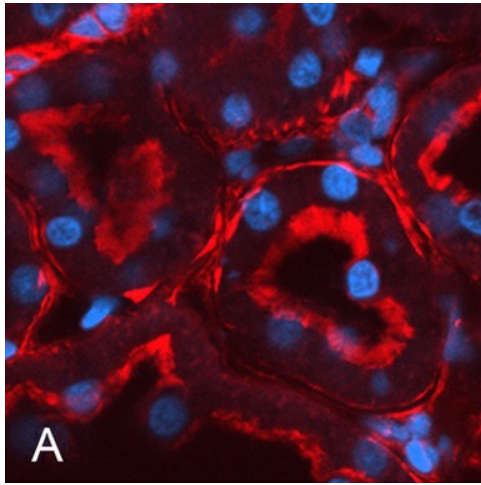
Western blot - muscle Actin antibody [EP184E]; Anti-muscle Actin antibody [EP184E] at 1/1000 dilution + A431 cell lysate at 10ug/lane.Secondary.Goat anti-rabbit, HRP labelled. at 1/2000 dilution.Predicted band size : 42 kDa.Observed band size : 42 kDa.



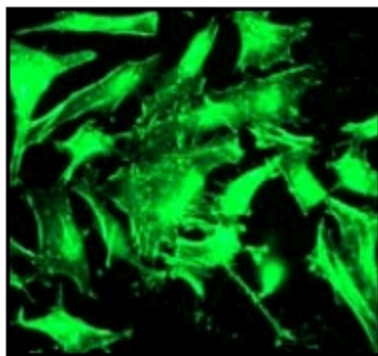
Immunohistochemistry (Paraffin-embedded sections) - muscle Actin antibody [EP184E]; Immunohistochemical staining of paraffin-embedded human cardiac muscle using anti-Actin TA303378 at a 1/100 dilution.



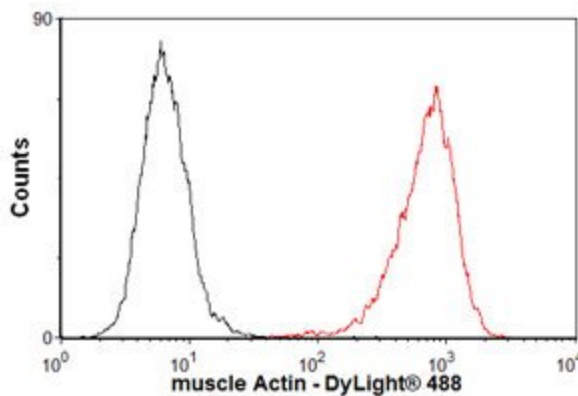
Immunohistochemistry (Formalin/PFA-fixed paraffin-embedded sections) - Anti-muscle Actin antibody [EP184E]; Fluorescent immunohistochemical analysis of paraffin-embedded human smooth muscle tissue using TA303378. Green-specific fluorescent staining.



Immunohistochemistry (Frozen sections) - Anti-muscle Actin antibody [EP184E]; Immunohistochemical analysis of rat kidney tubule tissue, staining muscle Actin with TA303378.



Immunocytochemistry/ Immunofluorescence - muscle Actin antibody [EP184E]; Immunofluorescent staining of HeLa cells using TA303378 at a 1/250 dilution.



Flow Cytometry- Anti-muscle Actin antibody (TA303378); Overlay histogram showing HeLa cells stained with TA303378 (red line). The secondary antibody used was DyLight 488 goat anti-rabbit IgG (H+L) at 1:500. Isotype control antibody (black line) was rabbit IgG (monoclonal) (1ug/1x10⁶ cells) used under the same conditions. This antibody gave a positive signal in HeLa cells under the same conditions.