

Product datasheet for **TA303369**

Alpha 2 Antiplasmin (SERPINF2) Goat Polyclonal Antibody

Product data:

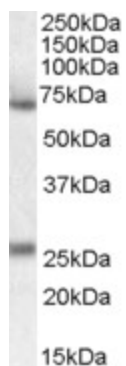
Product Type:	Primary Antibodies
Applications:	WB
Recommended Dilution:	ELISA: 1:16,000. WB: 0.3-1 µg/ml.
Reactivity:	Human
Host:	Goat
Isotype:	IgG
Clonality:	Polyclonal
Immunogen:	Peptide with sequence C-KDFLQSLKGFPRGDK, from the internal region of the protein sequence according to NP_000925.2.
Formulation:	Supplied at 0.5 mg/ml in Tris saline, 0.02% sodium azide, pH7.3 with 0.5% bovine serum albumin.
Concentration:	lot specific
Purification:	Purified from goat serum by ammonium sulphate precipitation followed by antigen affinity chromatography using the immunizing peptide. Supplied at 0.5 mg/ml in Tris saline, 0.02% sodium azide, pH7.3 with 0.5% bovine serum albumin. Aliquot and store at -20°C. Minimize freezing and thawing.
Conjugation:	Unconjugated
Storage:	Store at -20°C as received.
Stability:	Stable for 12 months from date of receipt.
Gene Name:	serpin family F member 2
Database Link:	NP_000925 Entrez Gene 5345 Human P08697
Background:	The major targets of this inhibitor are plasmin and trypsin, but it also inactivates chymotrypsin
Synonyms:	A2AP; AAP; ALPHA-2-PI; API; PLI
Protein Families:	Druggable Genome, Secreted Protein



[View online »](#)

Protein Pathways: Complement and coagulation cascades

Product images:



TA303369 (0.1ug/ml) staining of Human Duodenum lysate (35ug protein in RIPA buffer). Primary incubation was 1 hour. Detected by chemiluminescence.