

Product datasheet for **TA303362**

Orexin Receptor 1 (HCRTR1) Goat Polyclonal Antibody

Product data:

| | |
|-----------------------|--------------------------------------------------------------------------------------------------------------------------------------------------------------------------------------------------------------------------------------------------------------------------------------------------------------------|
| Product Type: | Primary Antibodies |
| Applications: | IF, WB |
| Recommended Dilution: | ELISA: 1:32,000. WB: 0.3-1 µg/ml. |
| Reactivity: | Human, Mouse, Rat (Expected from sequence similarity: Dog, Pig, Cow) |
| Host: | Goat |
| Isotype: | IgG |
| Clonality: | Polyclonal |
| Immunogen: | Peptide with sequence C-YNFLSGKFREQFK, from the internal region of the protein sequence according to NP_001516.1; NP_001517.1. |
| Formulation: | Supplied at 0.5 mg/ml in Tris saline, 0.02% sodium azide, pH7.3 with 0.5% bovine serum albumin. |
| Purification: | Purified from goat serum by ammonium sulphate precipitation followed by antigen affinity chromatography using the immunizing peptide. Supplied at 0.5 mg/ml in Tris saline, 0.02% sodium azide, pH7.3 with 0.5% bovine serum albumin. Aliquot and store at -20°C. Minimize freezing and thawing. |
| Conjugation: | Unconjugated |
| Storage: | Store at -20°C as received. |
| Stability: | Stable for 12 months from date of receipt. |
| Gene Name: | hypocretin receptor 1 |
| Database Link: | NP_001516 Entrez Gene 25593 Rat Entrez Gene 230777 Mouse Entrez Gene 100855896 Dog Entrez Gene 3061 Human O43613 |
| Background: | The protein encoded by this gene is a G-protein coupled receptor involved in the regulation of feeding behavior. The encoded protein selectively binds the hypothalamic neuropeptide orexin A. A related gene (HCRTR2) encodes a G-protein coupled receptor that binds orexin A and orexin B. [provided by RefSeq] |
| Synonyms: | OX1R |

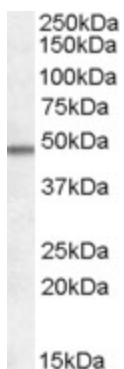


[View online »](#)

Protein Families: Druggable Genome, ES Cell Differentiation/IPS, GPCR, Transmembrane

Protein Pathways: Neuroactive ligand-receptor interaction

Product images:



TA303362 (0.5ug/ml) staining of Frontal Cortex lysate (35ug protein in RIPA buffer). Primary incubation was 1 hour. Detected by chemiluminescence.

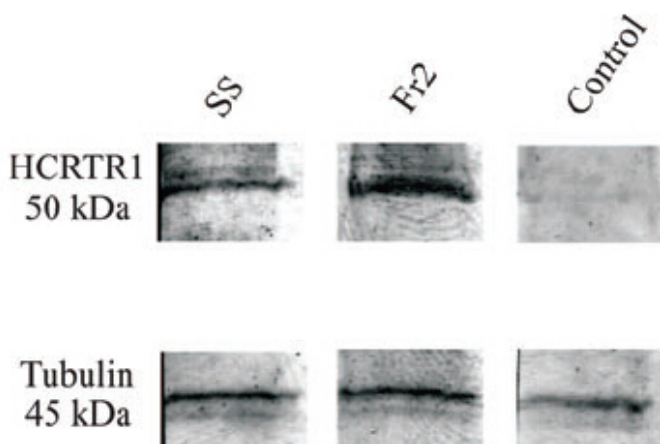
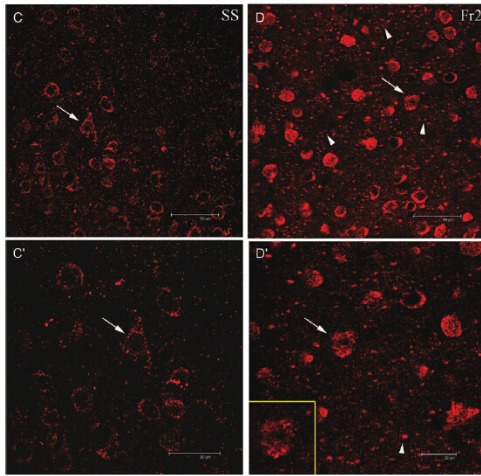


Figure from citation: Western Blot of HCRTR1 protein level by using anti-HCRTR1 antibody in mouse membrane fractions. Dilution: 1:500 [View Citation](#)



ICC analysis of HCRTR-1 expression by using anti-HCRTR1 antibody. In layer V of SS (C), the HCRTR-1 granular immunoreactivity was detected at the level of neuronal cell bodies based on morphology (arrows). (C') gives a higher magnification detail of (C). In layer V of Fr2 (D), the HCRTR-1 positive (+) signal was more intense than in SS (arrows and inset in D'), but also in neuropilar processes of different caliber (arrowheads). (D') gives a higher magnification detail of (C). Dilution: 1:150