

## Product datasheet for **TA303359**

### SEL1L Goat Polyclonal Antibody

#### Product data:

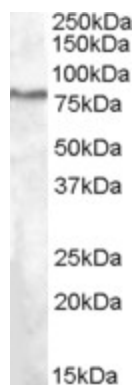
Product Type:	Primary Antibodies
Applications:	WB
Recommended Dilution:	ELISA: 1:4,000. WB: 1-3µg/ml.
Reactivity:	Human (Expected from sequence similarity: Mouse, Rat, Dog, Pig, Cow)
Host:	Goat
Isotype:	IgG
Clonality:	Polyclonal
Immunogen:	Peptide with sequence C-TAYNSYKDG DYN, from the internal region of the protein sequence according to NP_005056.3.
Formulation:	Supplied at 0.5 mg/ml in Tris saline, 0.02% sodium azide, pH7.3 with 0.5% bovine serum albumin.
Concentration:	lot specific
Purification:	Purified from goat serum by ammonium sulphate precipitation followed by antigen affinity chromatography using the immunizing peptide. Supplied at 0.5 mg/ml in Tris saline, 0.02% sodium azide, pH7.3 with 0.5% bovine serum albumin. Aliquot and store at -20°C. Minimize freezing and thawing.
Conjugation:	Unconjugated
Storage:	Store at -20°C as received.
Stability:	Stable for 12 months from date of receipt.
Gene Name:	SEL1L ERAD E3 ligase adaptor subunit
Database Link:	<a href="#">NP_005056</a> <a href="#">Entrez Gene 20338 Mouse</a> <a href="#">Entrez Gene 314352 Rat</a> <a href="#">Entrez Gene 480409 Dog</a> <a href="#">Entrez Gene 6400 Human</a> <a href="#">Q9UBV2</a>
Background:	May play a role in Notch signaling (By similarity). May be involved in the endoplasmic reticulum quality control (ERQC) system also called ER-associated degradation (ERAD) involved in ubiquitin-dependent degradation of misfolded endoplasmic reticulum proteins
Synonyms:	PRO1063; SEL1-LIKE; SEL1L1



[View online »](#)

Protein Families: Druggable Genome, Transmembrane

### Product images:



TA303359 (1ug/ml) staining of HepG2 lysate (35ug protein in RIPA buffer). Primary incubation was 1 hour. Detected by chemiluminescence.