

## Product datasheet for **TA303358**

### CHRN3 Goat Polyclonal Antibody

#### Product data:

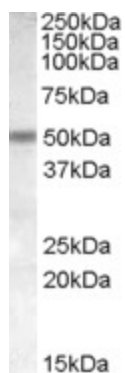
Product Type:	Primary Antibodies
Applications:	WB
Recommended Dilution:	ELISA: 1:16,000. WB: 1-3µg/ml.
Reactivity:	Human (Expected from sequence similarity: Mouse, Rat)
Host:	Goat
Isotype:	IgG
Clonality:	Polyclonal
Immunogen:	Peptide with sequence C-SRHVKKEHFISQ, from the internal region of the protein sequence according to NP_000740.1.
Formulation:	Supplied at 0.5 mg/ml in Tris saline, 0.02% sodium azide, pH7.3 with 0.5% bovine serum albumin.
Concentration:	lot specific
Purification:	Purified from goat serum by ammonium sulphate precipitation followed by antigen affinity chromatography using the immunizing peptide. Supplied at 0.5 mg/ml in Tris saline, 0.02% sodium azide, pH7.3 with 0.5% bovine serum albumin. Aliquot and store at -20°C. Minimize freezing and thawing.
Conjugation:	Unconjugated
Storage:	Store at -20°C as received.
Stability:	Stable for 12 months from date of receipt.
Gene Name:	cholinergic receptor nicotinic beta 3 subunit
Database Link:	<a href="#">NP_000740</a> <a href="#">Entrez Gene 108043 Mouse</a> <a href="#">Entrez Gene 171131 Rat</a> <a href="#">Entrez Gene 1142 Human</a> <a href="#">Q05901</a>
Background:	After binding acetylcholine, the AChR responds by an extensive change in conformation that affects all subunits and leads to opening of an ion-conducting channel across the plasma membrane
Synonyms:	acetylcholine receptor; beta-3 subunit; beta 3; beta polypeptide 3; cholinergic receptor; neuronal nicotinic; nicotinic



[View online »](#)

Protein Families: Druggable Genome, Ion Channels: Cys-loop Receptors, Transmembrane

### Product images:



TA303358 (1ug/ml) staining of Human Cerebellum lysate (35ug protein in RIPA buffer). Primary incubation was 1 hour. Detected by chemiluminescence.