

Product datasheet for **TA303354**

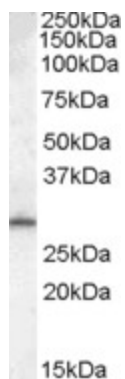
MTHFD2 (MTHFD2L) Goat Polyclonal Antibody

Product data:

| | |
|------------------------------|--|
| Product Type: | Primary Antibodies |
| Applications: | WB |
| Recommended Dilution: | ELISA: 1:128,000. WB: 0.1-0.3µg/ml. |
| Reactivity: | Human |
| Host: | Goat |
| Isotype: | IgG |
| Clonality: | Polyclonal |
| Immunogen: | Peptide with sequence KHIQKEIQRGVES-C, from the N Terminus of the protein sequence according to NP_001004346.2. |
| Formulation: | Supplied at 0.5 mg/ml in Tris saline, 0.02% sodium azide, pH7.3 with 0.5% bovine serum albumin. |
| Concentration: | lot specific |
| Purification: | Purified from goat serum by ammonium sulphate precipitation followed by antigen affinity chromatography using the immunizing peptide. Supplied at 0.5 mg/ml in Tris saline, 0.02% sodium azide, pH7.3 with 0.5% bovine serum albumin. Aliquot and store at -20°C. Minimize freezing and thawing. |
| Conjugation: | Unconjugated |
| Storage: | Store at -20°C as received. |
| Stability: | Stable for 12 months from date of receipt. |
| Gene Name: | methylenetetrahydrofolate dehydrogenase (NADP+ dependent) 2-like |
| Database Link: | NP_001004346 Entrez Gene 441024 Human Q9H903 |
| Background: | NADP-dependent methylenetetrahydrofolate dehydrogenase 2-like protein |
| Synonyms: | FLJ13105; methylenetetrahydrofolate dehydrogenase (NADP+ dependent) 2-like; MGC45532; MGC72244 |



[View online »](#)

Product images:

TA303354 (0.1ug/ml) staining of Human Testis lysate (35ug protein in RIPA buffer). Primary incubation was 1 hour. Detected by chemiluminescence.