

Product datasheet for **TA303350**

LYN Goat Polyclonal Antibody

Product data:

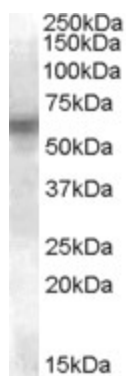
Product Type:	Primary Antibodies
Applications:	WB
Recommended Dilution:	ELISA: 1:16,000. WB: 0.1-0.3µg/ml.
Reactivity:	Human (Expected from sequence similarity: Cow)
Host:	Goat
Isotype:	IgG
Clonality:	Polyclonal
Immunogen:	Peptide with sequence C-KTQPVRNTERT, from the internal region of the protein sequence according to NP_002341.1.
Formulation:	Supplied at 0.5 mg/ml in Tris saline, 0.02% sodium azide, pH7.3 with 0.5% bovine serum albumin.
Concentration:	lot specific
Purification:	Purified from goat serum by ammonium sulphate precipitation followed by antigen affinity chromatography using the immunizing peptide. Supplied at 0.5 mg/ml in Tris saline, 0.02% sodium azide, pH7.3 with 0.5% bovine serum albumin. Aliquot and store at -20°C. Minimize freezing and thawing.
Conjugation:	Unconjugated
Storage:	Store at -20°C as received.
Stability:	Stable for 12 months from date of receipt.
Gene Name:	LYN proto-oncogene, Src family tyrosine kinase
Database Link:	NP_001104567 Entrez Gene 4067 Human P07948
Background:	Yamaguchi sarcoma viral (v-yes-1) oncogene homolog
Synonyms:	JTK8; p53Lyn; p56Lyn
Protein Families:	Druggable Genome, Protein Kinase



[View online »](#)

Protein Pathways: B cell receptor signaling pathway, Chemokine signaling pathway, Epithelial cell signaling in Helicobacter pylori infection, Fc epsilon RI signaling pathway, Fc gamma R-mediated phagocytosis, Long-term depression

Product images:



TA303350 (0.1ug/ml) staining of U937 lysate (35ug protein in RIPA buffer). Primary incubation was 1 hour. Detected by chemiluminescence.