

Product datasheet for **TA303348**

DACH1 Goat Polyclonal Antibody

Product data:

Product Type:	Primary Antibodies
Applications:	WB
Recommended Dilution:	ELISA: 116,000. WB: 0.1-0.3µg/ml.
Reactivity:	Human (Expected from sequence similarity: Mouse, Rat, Dog, Pig)
Host:	Goat
Isotype:	IgG
Clonality:	Polyclonal
Immunogen:	Peptide with sequence SPVENTPQNNECK, from the internal region of the protein sequence according to NP_542937.1; NP_542938.1; NP_004383.2.
Formulation:	Supplied at 0.5 mg/ml in Tris saline, 0.02% sodium azide, pH7.3 with 0.5% bovine serum albumin.
Concentration:	lot specific
Purification:	Purified from goat serum by ammonium sulphate precipitation followed by antigen affinity chromatography using the immunizing peptide. Supplied at 0.5 mg/ml in Tris saline, 0.02% sodium azide, pH7.3 with 0.5% bovine serum albumin. Aliquot and store at -20°C. Minimize freezing and thawing.
Conjugation:	Unconjugated
Storage:	Store at -20°C as received.
Stability:	Stable for 12 months from date of receipt.
Gene Name:	dachshund family transcription factor 1
Database Link:	NP_004383 Entrez Gene 13134 Mouse Entrez Gene 306096 Rat Entrez Gene 485489 Dog Entrez Gene 1602 Human Q9UI36



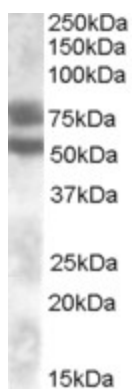
[View online »](#)

Background: This gene is similar to the *Drosophila melanogaster* *dachshund* gene, which encodes a nuclear factor essential for determining cell fates in the eye, leg, and nervous system of the fly. It is a member of the Ski gene family and is thought to be involved in eye development. Four alternatively spliced transcripts encoding different isoforms have been described for this gene. [provided by RefSeq]

Synonyms: DACH

Protein Families: Transcription Factors

Product images:



TA303348 (0.1ug/ml) staining of Human Kidney lysate (35ug protein in RIPA buffer). Primary incubation was 1 hour. Detected by chemiluminescence.