

## Product datasheet for **TA303347**

### SPI1 Goat Polyclonal Antibody

#### Product data:

Product Type:	Primary Antibodies
Applications:	IHC, WB
Recommended Dilution:	ELISA: 1:32,000. WB: 0.03-0.1µg/ml.IHC:3.75µg/ml
Reactivity:	Human (Expected from sequence similarity: Rat)
Host:	Goat
Isotype:	IgG
Clonality:	Polyclonal
Immunogen:	Peptide with sequence C-DLYQRQTHEY, from the internal region of the protein sequence according to NP_001074016.1; NP_003111.2.
Formulation:	Supplied at 0.5 mg/ml in Tris saline, 0.02% sodium azide, pH7.3 with 0.5% bovine serum albumin.
Concentration:	lot specific
Purification:	Purified from goat serum by ammonium sulphate precipitation followed by antigen affinity chromatography using the immunizing peptide. Supplied at 0.5 mg/ml in Tris saline, 0.02% sodium azide, pH7.3 with 0.5% bovine serum albumin. Aliquot and store at -20°C. Minimize freezing and thawing.
Conjugation:	Unconjugated
Storage:	Store at -20°C as received.
Stability:	Stable for 12 months from date of receipt.
Gene Name:	Spi-1 proto-oncogene
Database Link:	<a href="#">NP_001074016</a> <a href="#">Entrez Gene 366126 Rat</a> <a href="#">Entrez Gene 6688 Human</a> <a href="#">P17947</a>



[View online »](#)

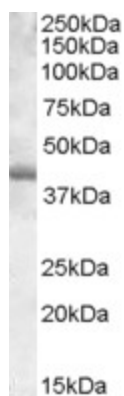
**Background:** This gene encodes an ETS-domain transcription factor that activates gene expression during myeloid and B-lymphoid cell development. The nuclear protein binds to a purine-rich sequence known as the PU-box found near the promoters of target genes, and regulates their expression in coordination with other transcription factors and cofactors. The protein can also regulate alternative splicing of target genes. Multiple transcript variants encoding different isoforms have been found for this gene. [provided by RefSeq]

**Synonyms:** OF; PU.1; SFPI1; SPI-1; SPI-A

**Protein Families:** Transcription Factors

**Protein Pathways:** Acute myeloid leukemia, Pathways in cancer

### Product images:



TA303347 (0.03ug/ml) staining of DAUDI lysate (35ug protein in RIPA buffer). Primary incubation was 1 hour. Detected by chemiluminescence.