

Product datasheet for **TA303346**

MARK2 Goat Polyclonal Antibody

Product data:

Product Type:	Primary Antibodies
Applications:	WB
Recommended Dilution:	ELISA: 1:16,000. WB: 0.3-1 µg/ml.
Reactivity:	Human (Expected from sequence similarity: Mouse, Rat, Cow)
Host:	Goat
Isotype:	IgG
Clonality:	Polyclonal
Immunogen:	Peptide with sequence C-QNGKDSTAPQR, from the internal region of the protein sequence according to NP_001034557.1; NP_001034558.1; NP_004945.3; NP_059672.2.
Formulation:	Supplied at 0.5 mg/ml in Tris saline, 0.02% sodium azide, pH7.3 with 0.5% bovine serum albumin.
Concentration:	lot specific
Purification:	Purified from goat serum by ammonium sulphate precipitation followed by antigen affinity chromatography using the immunizing peptide. Supplied at 0.5 mg/ml in Tris saline, 0.02% sodium azide, pH7.3 with 0.5% bovine serum albumin. Aliquot and store at -20°C. Minimize freezing and thawing.
Conjugation:	Unconjugated
Storage:	Store at -20°C as received.
Stability:	Stable for 12 months from date of receipt.
Database Link:	NP_001034557 Entrez Gene 13728 Mouse Entrez Gene 60328 Rat
Background:	EMK (ELKL Motif Kinase) is a small family of ser/thr protein kinases involved in the control of cell polarity, microtubule stability and cancer. Several cDNA clones have been isolated that encoded two isoforms of the human ser/thr protein kinase EMK1. These isoforms were characterized by the presence of a 162-bp alternative exon that gave rise to two forms, one containing the exon and the other one lacking it. Both forms were found to be coexpressed in a number of selected cell lines and tissue samples. The human EMK1 was shown to be encoded by a single mRNA ubiquitously expressed. [provided by RefSeq]

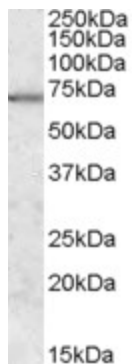


[View online »](#)

Synonyms: ELKL motif kinase 1; EMK1; MAP; MGC99619; microtubule affinity-regulating kinase 2; PAR-1; Par1b; protein-serine; Ser; serine; threonine kinase; Thr protein kinase PAR-1B

Protein Families: Druggable Genome, Protein Kinase

Product images:



TA303346 (0.3ug/ml) staining of Human Brain (Cerebellum) lysate (35ug protein in RIPA buffer). Primary incubation was 1 hour. Detected by chemiluminescence.