

Product datasheet for **TA303343**

PNPLA3 Goat Polyclonal Antibody

Product data:

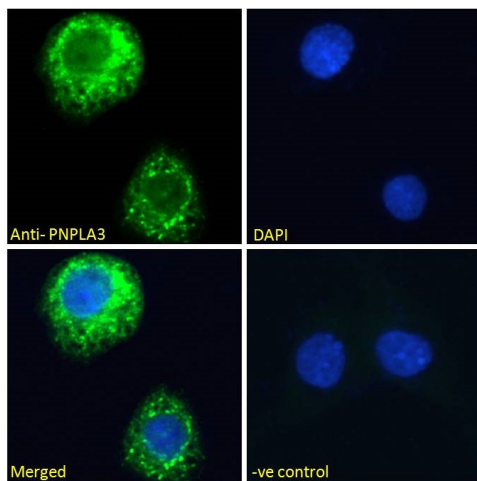
Product Type:	Primary Antibodies
Applications:	IHC, PEP-ELISA, WB
Recommended Dilution:	ELISA: 1:128,000. WB: 0.01-0.03µg/ml.IHC:4-6µg/ml.
Reactivity:	Human, Mouse (Expected from sequence similarity: Rat, Dog, Pig)
Host:	Goat
Isotype:	IgG
Clonality:	Polyclonal
Immunogen:	Peptide with sequence EHDICPKVKSTN, from the internal region of the protein sequence according to NP_473429.2.
Formulation:	Supplied at 0.5 mg/ml in Tris saline, 0.02% sodium azide, pH7.3 with 0.5% bovine serum albumin.
Concentration:	lot specific
Purification:	Purified from goat serum by ammonium sulphate precipitation followed by antigen affinity chromatography using the immunizing peptide. Supplied at 0.5 mg/ml in Tris saline, 0.02% sodium azide, pH7.3 with 0.5% bovine serum albumin. Aliquot and store at -20°C. Minimize freezing and thawing.
Conjugation:	Unconjugated
Storage:	Store at -20°C as received.
Stability:	Stable for 12 months from date of receipt.
Gene Name:	patatin like phospholipase domain containing 3
Database Link:	NP_079501 Entrez Gene 116939 MouseEntrez Gene 362972 RatEntrez Gene 609368 DogEntrez Gene 80339 Human Q9NST1
Background:	The protein encoded by this gene is a triacylglycerol lipase that mediates triacylglycerol hydrolysis in adipocytes. The encoded protein, which appears to be membrane bound, may be involved in the balance of energy usage/storage in adipocytes. [provided by RefSeq]
Synonyms:	ADPN; C22orf20; iPLA(2)epsilon



[View online »](#)

Protein Pathways: Glycerolipid metabolism, Glycerophospholipid metabolism, Limonene and pinene degradation, Metabolic pathways, Phenylalanine metabolism, Tyrosine metabolism

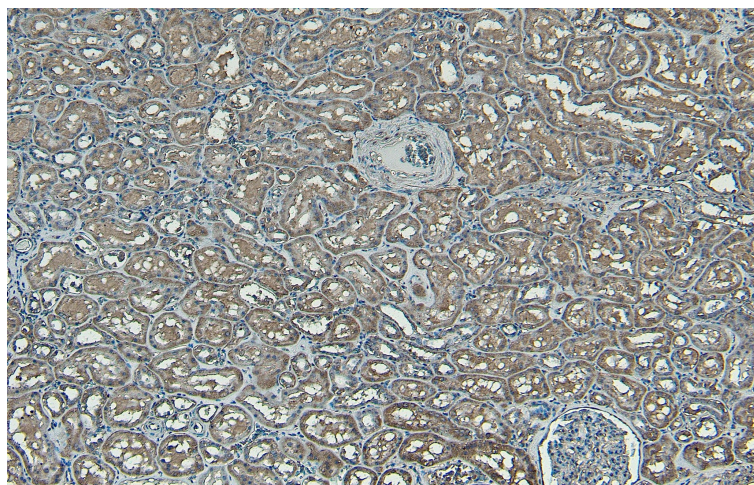
Product images:



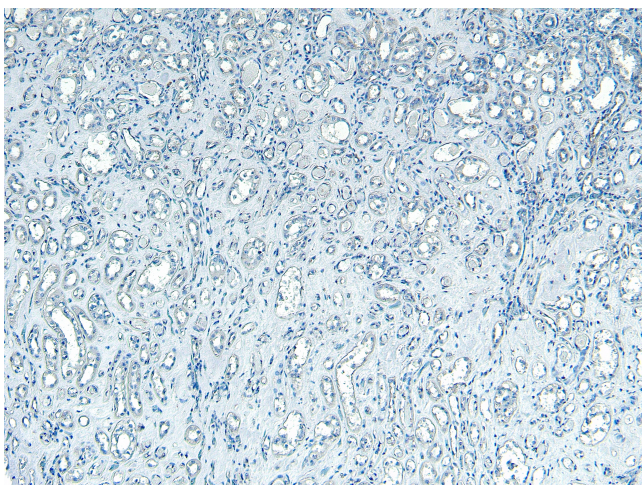
TA303343 Immunofluorescence analysis of paraformaldehyde fixed HepG2 cells, permeabilized with 0.15% Triton. Primary incubation 1hr (10ug/ml) followed by Alexa Fluor 488 secondary antibody (2ug/ml), showing Mitochondrial staining. The nuclear stain is DAPI (blue). Negative control: Unimmunized goat IgG (10ug/ml) followed by Alexa Fluor 488 secondary antibody (2ug/ml). **This data is from a previous batch, not on sale.**



TA303343 (0.03µg/ml) staining of Mouse Adrenal Gland lysate (35µg protein in RIPA buffer). Detected by chemiluminescence.



TA303343 (8 μ g/ml) staining of paraffin embedded Human Kidney. Heat induced antigen retrieval with citrate buffer pH 6, HRP-staining.



TA303343 Negative Control showing staining of paraffin embedded Human Kidney, with no primary antibody.