

Product datasheet for **TA303342**

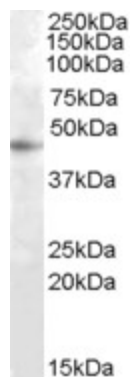
RASSF6 Goat Polyclonal Antibody

Product data:

Product Type:	Primary Antibodies
Applications:	WB
Recommended Dilution:	ELISA: 1:16,000. WB: 1-3µg/ml.
Reactivity:	Human
Host:	Goat
Isotype:	IgG
Clonality:	Polyclonal
Immunogen:	Peptide with sequence C-SNTLKP H AKDEPDS, from the internal region of the protein sequence according to NP_803876.1; NP_958834.1.
Formulation:	Supplied at 0.5 mg/ml in Tris saline, 0.02% sodium azide, pH7.3 with 0.5% bovine serum albumin.
Concentration:	lot specific
Purification:	Purified from goat serum by ammonium sulphate precipitation followed by antigen affinity chromatography using the immunizing peptide. Supplied at 0.5 mg/ml in Tris saline, 0.02% sodium azide, pH7.3 with 0.5% bovine serum albumin. Aliquot and store at -20°C. Minimize freezing and thawing.
Conjugation:	Unconjugated
Storage:	Store at -20°C as received.
Stability:	Stable for 12 months from date of receipt.
Gene Name:	Ras association domain family member 6
Database Link:	NP_803876 Entrez Gene 166824 Human Q6ZTQ3
Background:	RASSF6 is a member of the RAS association (RA) domain family of RAS effectors/tumor suppressors that mediate some of the growth inhibitory properties of RAS (see HRAS; MIM 190020) oncogenes (Eckfeld et al., 2004 [PubMed 15574778]). [supplied by OMIM]
Synonyms:	DKFZp686K23225



[View online »](#)

Product images:

TA303342 (1ug/ml) staining of HepG2 cell lysate (35ug protein in RIPA buffer). Primary incubation was 1 hour. Detected by chemiluminescence.