

Product datasheet for **TA303340**

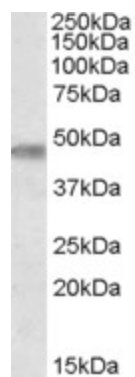
TOM1L1 Goat Polyclonal Antibody

Product data:

| | |
|------------------------------|--|
| Product Type: | Primary Antibodies |
| Applications: | WB |
| Recommended Dilution: | ELISA: 1:64,000. WB: 0.3-1 µg/ml. |
| Reactivity: | Human |
| Host: | Goat |
| Isotype: | IgG |
| Clonality: | Polyclonal |
| Immunogen: | Peptide with sequence C-EQNKNQKEATNTTSE, from the internal region of the protein sequence according to NP_005477.1. |
| Formulation: | Supplied at 0.5 mg/ml in Tris saline, 0.02% sodium azide, pH7.3 with 0.5% bovine serum albumin. |
| Concentration: | lot specific |
| Purification: | Purified from goat serum by ammonium sulphate precipitation followed by antigen affinity chromatography using the immunizing peptide. Supplied at 0.5 mg/ml in Tris saline, 0.02% sodium azide, pH7.3 with 0.5% bovine serum albumin. Aliquot and store at -20°C. Minimize freezing and thawing. |
| Conjugation: | Unconjugated |
| Storage: | Store at -20°C as received. |
| Stability: | Stable for 12 months from date of receipt. |
| Gene Name: | target of myb1 like 1 membrane trafficking protein |
| Database Link: | NP_005477 Entrez Gene 10040 Human O75674 |
| Background: | Probable adapter protein involved in signaling pathways. Interacts with the SH2 and SH3 domains of various signaling proteins when it is phosphorylated. May promotes FYN activation, possibly by disrupting intramolecular SH3-dependent interactions (By similarity) |
| Synonyms: | KNS-CL.3; OK; SRCASM |



[View online »](#)

Product images:

TA303340 (0.3ug/ml) staining of Human Brain (Cerebellum) lysate (35ug protein in RIPA buffer). Primary incubation was 1 hour. Detected by chemiluminescence.