

## Product datasheet for **TA303320**

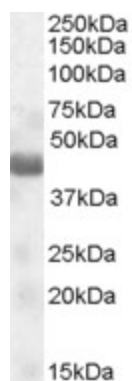
### **NPR2L (NPRL2) Goat Polyclonal Antibody**

#### **Product data:**

<b>Product Type:</b>	Primary Antibodies
<b>Applications:</b>	WB
<b>Recommended Dilution:</b>	ELISA: 1:32,000. WB: 0. 1-0.3µg/ml.
<b>Reactivity:</b>	Human (Expected from sequence similarity: Mouse)
<b>Host:</b>	Goat
<b>Isotype:</b>	IgG
<b>Clonality:</b>	Polyclonal
<b>Immunogen:</b>	Peptide with sequence QYSNVYCPTPKV, from the internal region of the protein sequence according to NP_006536.3.
<b>Formulation:</b>	Supplied at 0.5 mg/ml in Tris saline, 0.02% sodium azide, pH7.3 with 0.5% bovine serum albumin.
<b>Concentration:</b>	lot specific
<b>Purification:</b>	Purified from goat serum by ammonium sulphate precipitation followed by antigen affinity chromatography using the immunizing peptide. Supplied at 0.5 mg/ml in Tris saline, 0.02% sodium azide, pH7.3 with 0.5% bovine serum albumin. Aliquot and store at -20°C. Minimize freezing and thawing.
<b>Conjugation:</b>	Unconjugated
<b>Storage:</b>	Store at -20°C as received.
<b>Stability:</b>	Stable for 12 months from date of receipt.
<b>Gene Name:</b>	NPR2-like, GATOR1 complex subunit
<b>Database Link:</b>	<a href="#">NP_006536</a> <a href="#">Entrez Gene 56032 Mouse</a> <a href="#">Entrez Gene 10641 Human</a> <a href="#">Q8WTW4</a>
<b>Background:</b>	May act as a tumor suppressor
<b>Synonyms:</b>	FFEVF2; NPR2; NPR2L; TUSC4
<b>Protein Families:</b>	Druggable Genome



[View online »](#)

**Product images:**

TA303320 (0.1ug/ml) staining of Human Muscle lysate (35ug protein in RIPA buffer). Primary incubation was 1 hour. Detected by chemiluminescence.