

## Product datasheet for **TA303317**

### Aminoadipate aminotransferase (AADAT) Goat Polyclonal Antibody

#### Product data:

Product Type:	Primary Antibodies
Applications:	WB
Recommended Dilution:	ELISA: 1:32,000. WB: 1-3µg/ml.
Reactivity:	Human
Host:	Goat
Isotype:	IgG
Clonality:	Polyclonal
Immunogen:	Peptide with sequence C-KPEDAKNPQKNTPK, from the internal region of the protein sequence according to NP_057312.1; NP_872603.1.
Formulation:	Supplied at 0.5 mg/ml in Tris saline, 0.02% sodium azide, pH7.3 with 0.5% bovine serum albumin.
Concentration:	lot specific
Purification:	Purified from goat serum by ammonium sulphate precipitation followed by antigen affinity chromatography using the immunizing peptide. Supplied at 0.5 mg/ml in Tris saline, 0.02% sodium azide, pH7.3 with 0.5% bovine serum albumin. Aliquot and store at -20°C. Minimize freezing and thawing.
Conjugation:	Unconjugated
Storage:	Store at -20°C as received.
Stability:	Stable for 12 months from date of receipt.
Gene Name:	aminoadipate aminotransferase
Database Link:	<a href="#">NP_057312</a> <a href="#">Entrez Gene 51166 Human</a> <a href="#">Q8N5Z0</a>

[View online »](#)

**Background:**

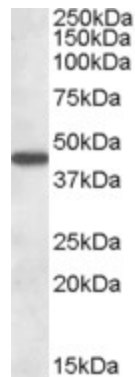
This gene encodes a protein that is highly similar to mouse and rat kynurenine aminotransferase II. The rat protein is a homodimer with two transaminase activities. One activity is the transamination of alpha-aminoadipic acid, a final step in the saccharopine pathway which is the major pathway for L-lysine catabolism. The other activity involves the transamination of kynurenine to produce kynurenine acid, the precursor of kynurenic acid which has neuroprotective properties. Two alternative transcripts encoding the same isoform have been identified, however, additional alternative transcripts and isoforms may exist. [provided by RefSeq]

**Synonyms:**

KAT2; KATII; KYAT2

**Protein Pathways:**

Lysine biosynthesis, Lysine degradation, Metabolic pathways, Tryptophan metabolism

**Product images:**


TA303317 (1ug/ml) staining of Human Liver lysate (35ug protein in RIPA buffer). Primary incubation was 1 hour. Detected by chemiluminescence.