

Product datasheet for **TA303316**

UXT Goat Polyclonal Antibody

Product data:

Product Type:	Primary Antibodies
Applications:	IHC, PEP-ELISA, WB
Recommended Dilution:	ELISA: 1:64,000. WB: 0.01-0.03ug/ml. IHC: 5-10ug/ml
Reactivity:	Human
Host:	Goat
Isotype:	IgG
Clonality:	Polyclonal
Immunogen:	Peptide with sequence C-DHRDKVYEQLAKY, from the C Terminus of the protein sequence according to NP_004173.1; NP_705582.1.
Formulation:	Supplied at 0.5 mg/ml in Tris saline, 0.02% sodium azide, pH7.3 with 0.5% bovine serum albumin.
Concentration:	lot specific
Purification:	Purified from goat serum by ammonium sulphate precipitation followed by antigen affinity chromatography using the immunizing peptide. Supplied at 0.5 mg/ml in Tris saline, 0.02% sodium azide, pH7.3 with 0.5% bovine serum albumin. Aliquot and store at -20°C. Minimize freezing and thawing.
Conjugation:	Unconjugated
Storage:	Store at -20°C as received.
Stability:	Stable for 12 months from date of receipt.
Gene Name:	ubiquitously expressed prefoldin like chaperone
Database Link:	NP_004173 Entrez Gene 8409 Human Q9UBK9
Background:	This gene encodes a novel protein which is highly conserved in mouse. It interacts with the N-terminus of the androgen receptor and plays a role in facilitating receptor-induced transcriptional activation. It is also likely to be involved in tumorigenesis as it is abundantly expressed in tumor tissues. This gene is part of a gene cluster on chromosome Xp11.23. Alternative splicing results in 2 transcript variants encoding different isoforms.

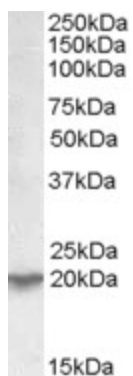


[View online »](#)

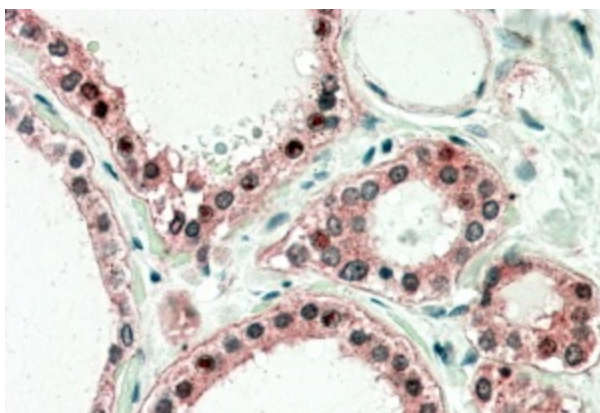
Synonyms: ART-27; STAP1

Protein Families: Druggable Genome

Product images:



TA303316 (0.03ug/ml) staining of Human Kidney lysate (35ug protein in RIPA buffer). Primary incubation was 1 hour. Detected by chemiluminescence.



TA303316 (5ug/ml) staining of paraffin embedded Human Thyroid Gland. Steamed antigen retrieval with citrate buffer pH 6, AP-staining.