

Product datasheet for **TA303312**

ABCB5 Goat Polyclonal Antibody

Product data:

Product Type:	Primary Antibodies
Applications:	FC, WB
Recommended Dilution:	ELISA: 1:32,000. WB: 0.3-1 µg/ml.
Reactivity:	Human
Host:	Goat
Isotype:	IgG
Clonality:	Polyclonal
Immunogen:	Peptide with sequence C-QTQHRNTSKKAQ, from the internal region of the protein sequence according to NP_848654.3.
Formulation:	Supplied at 0.5 mg/ml in Tris saline, 0.02% sodium azide, pH7.3 with 0.5% bovine serum albumin.
Purification:	Purified from goat serum by ammonium sulphate precipitation followed by antigen affinity chromatography using the immunizing peptide. Supplied at 0.5 mg/ml in Tris saline, 0.02% sodium azide, pH7.3 with 0.5% bovine serum albumin. Aliquot and store at -20°C. Minimize freezing and thawing.
Conjugation:	Unconjugated
Storage:	Store at -20°C as received.
Stability:	Stable for 12 months from date of receipt.
Gene Name:	ATP binding cassette subfamily B member 5
Database Link:	NP_848654 Entrez Gene 340273 Human Q2M3G0
Background:	ABCB5 belongs to the ATP-binding cassette (ABC) transporter superfamily of integral membrane proteins. These proteins participate in ATP-dependent transmembrane transport of structurally diverse molecules ranging from small ions, sugars, and peptides to more complex organic molecules (Chen et al., 2005 [PubMed 15760339]). [supplied by OMIM]
Synonyms:	ABCB5alpha; ABCB5beta; EST422562
Note:	This antibody has been successfully used in Flow Cytometry for Hep3B cells by customer.



[View online »](#)

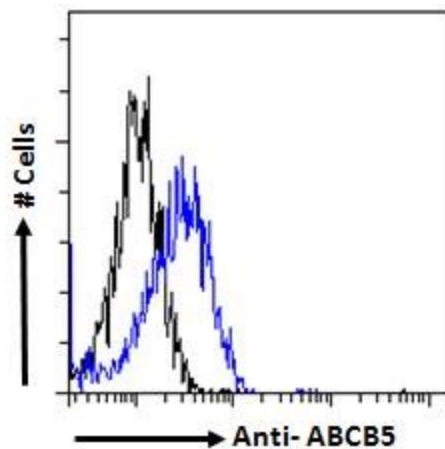
Protein Families: Druggable Genome, Transmembrane

Protein Pathways: ABC transporters

Product images:



TA303312 (0.3ug/ml) staining of lysates of cell line A431 (35ug protein in RIPA buffer). Primary incubation was 1 hour. Detected by chemiluminescence.



Flow cytometric analysis of paraformaldehyde fixed Heug2 cells (blue line), permeabilized with 0.5% Triton. Primary incubation 1hr (10ug/ml) followed by Alexa Fluor 488 secondary antibody (1ug/ml).