

## Product datasheet for **TA303307**

### Cell adhesion molecule 4 (CADM4) Goat Polyclonal Antibody

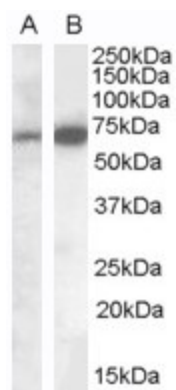
#### Product data:

Product Type:	Primary Antibodies
Applications:	IHC, WB
Recommended Dilution:	ELISA: 1:32,000. WB: 0.03-0.1µg/ml.
Reactivity:	Human (Expected from sequence similarity: Mouse, Rat, Dog)
Host:	Goat
Isotype:	IgG
Clonality:	Polyclonal
Immunogen:	Peptide with sequence C-REAFLNGSDGHRKE, from the C Terminus of the protein sequence according to NP_660339.1.
Formulation:	Supplied at 0.5 mg/ml in Tris saline, 0.02% sodium azide, pH7.3 with 0.5% bovine serum albumin.
Concentration:	lot specific
Purification:	Purified from goat serum by ammonium sulphate precipitation followed by antigen affinity chromatography using the immunizing peptide. Supplied at 0.5 mg/ml in Tris saline, 0.02% sodium azide, pH7.3 with 0.5% bovine serum albumin. Aliquot and store at -20°C. Minimize freezing and thawing.
Conjugation:	Unconjugated
Storage:	Store at -20°C as received.
Stability:	Stable for 12 months from date of receipt.
Gene Name:	cell adhesion molecule 4
Database Link:	<a href="#">NP_660339</a> <a href="#">Entrez Gene 260299 MouseEntrez Gene 365216 RatEntrez Gene 484465 DogEntrez Gene 199731 Human</a> <a href="#">Q8NFX8</a>
Background:	Involved in the cell-cell adhesion. Has calcium- and magnesium-independent cell-cell adhesion activity. May have tumor-suppressor activity
Synonyms:	IGSF4C; Necl-4; NECL4; synCAM4; TSLL2
Protein Families:	Transmembrane



[View online »](#)

## Product images:



Staining of Human Brain (Cerebellum) lysate (35ug protein in RIPA buffer). A) [TA303285] (0.1ug/ml) and B) TA303307 (0.05ug/ml). Primary incubation was 1 hour. Detected by chemiluminescence.