

Product datasheet for **TA303306**

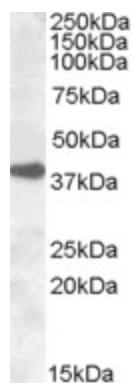
ERCC1 Goat Polyclonal Antibody

Product data:

Product Type:	Primary Antibodies
Applications:	WB
Recommended Dilution:	ELISA: 1:64,000. WB: 0.3-1 µg/ml.
Reactivity:	Human
Host:	Goat
Isotype:	IgG
Clonality:	Polyclonal
Immunogen:	Peptide with sequence DPGKDKEGVPQPS-C, from the N Terminus of the protein sequence according to NP_973730.1; NP_001974.1.
Formulation:	Supplied at 0.5 mg/ml in Tris saline, 0.02% sodium azide, pH7.3 with 0.5% bovine serum albumin.
Concentration:	lot specific
Purification:	Purified from goat serum by ammonium sulphate precipitation followed by antigen affinity chromatography using the immunizing peptide. Supplied at 0.5 mg/ml in Tris saline, 0.02% sodium azide, pH7.3 with 0.5% bovine serum albumin. Aliquot and store at -20°C. Minimize freezing and thawing.
Conjugation:	Unconjugated
Storage:	Store at -20°C as received.
Stability:	Stable for 12 months from date of receipt.
Gene Name:	ERCC excision repair 1, endonuclease non-catalytic subunit
Database Link:	NP_001974 Entrez Gene 2067 Human P07992
Background:	Structure-specific DNA repair endonuclease responsible for the 5'-incision during DNA repair
Synonyms:	COFS4; RAD10; UV20
Protein Families:	Druggable Genome
Protein Pathways:	Nucleotide excision repair



[View online »](#)

Product images:

TA303306 (0.3ug/ml) staining of A431 lysate (35ug protein in RIPA buffer). Primary incubation was 1 hour. Detected by chemiluminescence.