

Product datasheet for **TA303303**

Cytohesin 2 (CYTH2) Goat Polyclonal Antibody

Product data:

Product Type:	Primary Antibodies
Applications:	WB
Recommended Dilution:	ELISA: 1:32,000. WB: 0.5-1.5µg/ml.
Reactivity:	Human, Rat (Expected from sequence similarity: Mouse, Dog)
Host:	Goat
Isotype:	IgG
Clonality:	Polyclonal
Immunogen:	Peptide with sequence EDGVYEPPDLTP-C, from the N Terminus of the protein sequence according to NP_004219.2; NP_059431.1.
Formulation:	Supplied at 0.5 mg/ml in Tris saline, 0.02% sodium azide, pH7.3 with 0.5% bovine serum albumin.
Concentration:	lot specific
Purification:	Purified from goat serum by ammonium sulphate precipitation followed by antigen affinity chromatography using the immunizing peptide. Supplied at 0.5 mg/ml in Tris saline, 0.02% sodium azide, pH7.3 with 0.5% bovine serum albumin. Aliquot and store at -20°C. Minimize freezing and thawing.
Conjugation:	Unconjugated
Storage:	Store at -20°C as received.
Stability:	Stable for 12 months from date of receipt.
Gene Name:	cytohesin 2
Database Link:	NP_004219 Entrez Gene 19158 Mouse Entrez Gene 116692 Rat Entrez Gene 476423 Dog Entrez Gene 9266 Human Q99418



[View online »](#)

Background:

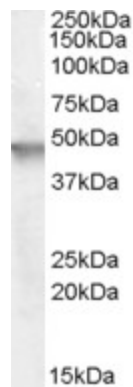
The protein encoded by this gene is a member of the PSCD family. Members of this family have identical structural organization that consists of an N-terminal coiled-coil motif, a central Sec7 domain, and a C-terminal pleckstrin homology (PH) domain. The coiled-coil motif is involved in homodimerization, the Sec7 domain contains guanine-nucleotide exchange protein (GEP) activity, and the PH domain interacts with phospholipids and is responsible for association of PSCDs with membranes. Members of this family appear to mediate the regulation of protein sorting and membrane trafficking. The encoded protein exhibits GEP activity in vitro with ARF1, ARF3, and ARF6 and is 83% homologous to CYTH1. Two transcript variants encoding different isoforms have been found for this gene. [provided by RefSeq]

Synonyms:

ARNO; CTS18; CTS18.1; cytohesin-2; PSCD2; PSCD2L; SEC7L; Sec7p-L; Sec7p-like

Protein Families:

Druggable Genome

Product images:

TA303303 (0.5ug/ml) staining of Human Brain (Cerebellum) lysate (35ug protein in RIPA buffer). Primary incubation was 1 hour. Detected by chemiluminescence.