

Product datasheet for **TA303299**

Cert1 Goat Polyclonal Antibody

Product data:

Product Type:	Primary Antibodies
Applications:	WB
Recommended Dilution:	ELISA: 1:32,000. WB: 0.5-1.5µg/ml.
Reactivity:	Mouse (Expected from sequence similarity: Human)
Host:	Goat
Isotype:	IgG
Clonality:	Polyclonal
Immunogen:	Peptide with sequence DHDSAPLNNRC, from the internal region of the protein sequence according to NP_005704.1; NP_112729.1.
Formulation:	Supplied at 0.5 mg/ml in Tris saline, 0.02% sodium azide, pH7.3 with 0.5% bovine serum albumin.
Concentration:	lot specific
Purification:	Purified from goat serum by ammonium sulphate precipitation followed by antigen affinity chromatography using the immunizing peptide. Supplied at 0.5 mg/ml in Tris saline, 0.02% sodium azide, pH7.3 with 0.5% bovine serum albumin. Aliquot and store at -20°C. Minimize freezing and thawing.
Conjugation:	Unconjugated
Storage:	Store at -20°C as received.
Stability:	Stable for 12 months from date of receipt.
Gene Name:	collagen, type IV, alpha 3 (Goodpasture antigen) binding protein
Database Link:	NP_075909 Entrez Gene 10087 Human Entrez Gene 68018 Mouse Q9EQG9



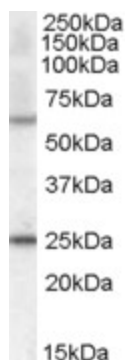
[View online »](#)

Background:

This gene encodes a kinase that specifically phosphorylates the N-terminal region of the non-collagenous domain of the alpha 3 chain of type IV collagen, known as the Goodpasture antigen. Goodpasture disease is the result of an autoimmune response directed at this antigen. One isoform of this protein is also involved in ceramide intracellular transport. Three transcript variants encoding different isoforms have been found for this gene. [provided by RefSeq]

Synonyms:

CERT; CERTL; FLJ20597; GPBP; hCERT; OTTHUMP00000128248; STARD11

Product images:

TA303299 (0.5ug/ml) staining of mouse heart lysate (35ug protein in RIPA buffer). Primary incubation was 1 hour. Detected by chemiluminescence.