

Product datasheet for **TA303296**

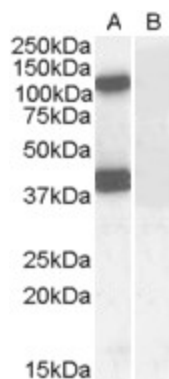
EPB4IL2 (EPB41L2) Goat Polyclonal Antibody

Product data:

Product Type:	Primary Antibodies
Applications:	WB
Recommended Dilution:	ELISA: 1:32,000. WB: 0.03-0.1µg/ml.
Reactivity:	Human
Host:	Goat
Isotype:	IgG
Clonality:	Polyclonal
Immunogen:	Peptide with sequence C-RREVRSPKAPH, from the internal region of the protein sequence according to NP_001422.1.
Formulation:	Supplied at 0.5 mg/ml in Tris saline, 0.02% sodium azide, pH7.3 with 0.5% bovine serum albumin.
Concentration:	lot specific
Purification:	Purified from goat serum by ammonium sulphate precipitation followed by antigen affinity chromatography using the immunizing peptide. Supplied at 0.5 mg/ml in Tris saline, 0.02% sodium azide, pH7.3 with 0.5% bovine serum albumin. Aliquot and store at -20°C. Minimize freezing and thawing.
Conjugation:	Unconjugated
Storage:	Store at -20°C as received.
Stability:	Stable for 12 months from date of receipt.
Gene Name:	erythrocyte membrane protein band 4.1 like 2
Database Link:	NP_001129026 Entrez Gene 2037 Human O43491
Background:	erythrocyte membrane protein band 4.1 like-protein 2
Synonyms:	4.1-G; 4.1G
Protein Pathways:	Tight junction



[View online »](#)

Product images:

TA303296 (0.1ug/ml) staining of Human Brain (Cerebellum) lysate (35ug protein in RIPA buffer) with (B) and without (A) blocking with the immunising peptide. Primary incubation was 1 hour. Detected by chemiluminescence.