

## Product datasheet for **TA303288**

### Steroid sulfatase (STS) Goat Polyclonal Antibody

#### Product data:

Product Type:	Primary Antibodies
Applications:	WB
Recommended Dilution:	ELISA: 1:32,000. WB: 0.01-0.03µg/ml.
Reactivity:	Human
Host:	Goat
Isotype:	IgG
Clonality:	Polyclonal
Immunogen:	Peptide with sequence C-QAGQKIDEPTSN, from the internal region of the protein sequence according to NP_000342.2.
Formulation:	Supplied at 0.5 mg/ml in Tris saline, 0.02% sodium azide, pH7.3 with 0.5% bovine serum albumin.
Concentration:	lot specific
Purification:	Purified from goat serum by ammonium sulphate precipitation followed by antigen affinity chromatography using the immunizing peptide. Supplied at 0.5 mg/ml in Tris saline, 0.02% sodium azide, pH7.3 with 0.5% bovine serum albumin. Aliquot and store at -20°C. Minimize freezing and thawing.
Conjugation:	Unconjugated
Storage:	Store at -20°C as received.
Stability:	Stable for 12 months from date of receipt.
Gene Name:	steroid sulfatase (microsomal), isozyme S
Database Link:	<a href="#">NP_000342</a> <a href="#">Entrez Gene 412 Human</a> <a href="#">P08842</a>
Background:	The protein encoded by this gene catalyzes the conversion of sulfated steroid precursors to estrogens during pregnancy. The encoded protein is found in the endoplasmic reticulum, where it acts as a homodimer. Mutations in this gene are known to cause X-linked ichthyosis (XLI). [provided by RefSeq]
Synonyms:	ARSC; ARSC1; ASC; ES; SSDD; XLI

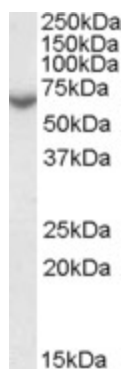


[View online »](#)

Protein Families: Druggable Genome, Transmembrane

Protein Pathways: Androgen and estrogen metabolism

### Product images:



TA303288 (0.01ug/ml) staining of Human Placenta lysate (35ug protein in RIPA buffer). Primary incubation was 1 hour. Detected by chemiluminescence.