

## Product datasheet for **TA303284**

### **B3GNT1 (B3GNT2) Goat Polyclonal Antibody**

#### **Product data:**

<b>Product Type:</b>	Primary Antibodies
<b>Applications:</b>	WB
<b>Recommended Dilution:</b>	ELISA: 32,000. WB: 0.1-0.3µg/ml.
<b>Reactivity:</b>	Human (Expected from sequence similarity: Mouse, Rat)
<b>Host:</b>	Goat
<b>Isotype:</b>	IgG
<b>Clonality:</b>	Polyclonal
<b>Immunogen:</b>	Peptide with sequence C-EKHKGFRTFDIE, from the internal region of the protein sequence according to NP_006568.2.
<b>Formulation:</b>	Supplied at 0.5 mg/ml in Tris saline, 0.02% sodium azide, pH7.3 with 0.5% bovine serum albumin.
<b>Concentration:</b>	lot specific
<b>Purification:</b>	Purified from goat serum by ammonium sulphate precipitation followed by antigen affinity chromatography using the immunizing peptide. Supplied at 0.5 mg/ml in Tris saline, 0.02% sodium azide, pH7.3 with 0.5% bovine serum albumin. Aliquot and store at -20°C. Minimize freezing and thawing.
<b>Conjugation:</b>	Unconjugated
<b>Storage:</b>	Store at -20°C as received.
<b>Stability:</b>	Stable for 12 months from date of receipt.
<b>Gene Name:</b>	UDP-GlcNAc:betaGal beta-1,3-N-acetylglucosaminyltransferase 2
<b>Database Link:</b>	<a href="#">NP_006568</a> <a href="#">Entrez Gene 53625 Mouse</a> <a href="#">Entrez Gene 305571 Rat</a> <a href="#">Entrez Gene 10678 Human</a> <a href="#">Q9NY97</a>
<b>Background:</b>	This gene encodes a member of the beta-1,3-N-acetylglucosaminyltransferase family. This enzyme is a type II transmembrane protein. It prefers the substrate of lacto-N-neotetraose, and is involved in the biosynthesis of poly-N-acetylglucosamine chains. [provided by RefSeq]
<b>Synonyms:</b>	3-Gn-T1; 3-Gn-T2; B3GN-T2; B3GNT; B3GNT-2; B3GNT1; beta-1; beta3Gn-T1; beta3Gn-T2; BETA3GNT; BGnT-2

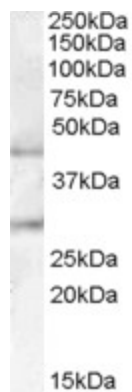


[View online »](#)

Protein Families: Transmembrane

Protein Pathways: Glycosphingolipid biosynthesis - lacto and neolacto series, Keratan sulfate biosynthesis, Metabolic pathways

### Product images:



TA303284 (0.1ug/ml) staining of Human Pancreas lysate (35ug protein in RIPA buffer). Primary incubation was 1 hour. Detected by chemiluminescence.