

Product datasheet for **TA303282**

CRF1 (CRHR1) Goat Polyclonal Antibody

Product data:

Product Type:	Primary Antibodies
Applications:	IF, PEP-ELISA, WB
Recommended Dilution:	ELISA: 1:32,000, WB: 0.1-0.3µg/ml, IF: 2ug/ml.
Reactivity:	Human, Mouse (Expected from sequence similarity: Rat)
Host:	Goat
Isotype:	IgG
Clonality:	Polyclonal
Immunogen:	Peptide with sequence C-NEEKKSKVHYH, from the internal region of the protein sequence according to NP_004373.2.
Formulation:	Supplied at 0.5 mg/ml in Tris saline, 0.02% sodium azide, pH7.3 with 0.5% bovine serum albumin.
Purification:	Purified from goat serum by ammonium sulphate precipitation followed by antigen affinity chromatography using the immunizing peptide. Supplied at 0.5 mg/ml in Tris saline, 0.02% sodium azide, pH7.3 with 0.5% bovine serum albumin. Aliquot and store at -20°C. Minimize freezing and thawing.
Conjugation:	Unconjugated
Storage:	Store at -20°C as received.
Stability:	Stable for 12 months from date of receipt.
Gene Name:	corticotropin releasing hormone receptor 1
Database Link:	NP_001138618 Entrez Gene 12921 Mouse Entrez Gene 58959 Rat Entrez Gene 1394 Human P34998
Background:	This gene encodes a G-protein coupled receptor that binds neuropeptides of the corticotropin releasing hormone family that are major regulators of the hypothalamic-pituitary-adrenal pathway. The encoded protein is essential for the activation of signal transduction pathways that regulate diverse physiological processes including stress, reproduction, immune response and obesity. Alternative splicing results in multiple transcript variants.



[View online »](#)

Synonyms: CRF-R; CRF-R-1; CRF-R1; CRF1; CRFR-1; CRFR1; CRH-R-1; CRH-R1; CRHR; CRHR1L

Note: This product was successfully used on cryosection of mouse brain

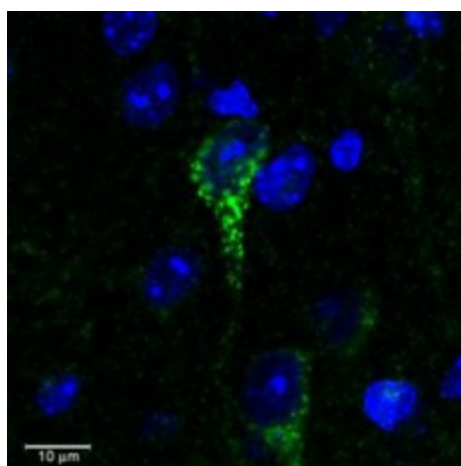
Protein Families: Druggable Genome, GPCR, Transmembrane

Protein Pathways: Long-term depression, Neuroactive ligand-receptor interaction

Product images:



TA303282 (0.1ug/ml) staining of human colon lysate (35ug protein in RIPA buffer). Primary incubation was 1 hour. Detected by chemiluminescence.



Confocal image (3um) of TA303282 (0.3ug/ml) staining in green a dendrite of a neuronal cell in C57 mouse cortex. Counter-stained with DAPI (in blue). Data kindly provided by Dr Y. Chen, TZ Baram lab, UC Irvine, CA.