

## Product datasheet for **TA303266**

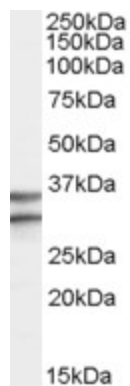
### GPR3 Goat Polyclonal Antibody

#### Product data:

Product Type:	Primary Antibodies
Applications:	WB
Recommended Dilution:	ELISA: 1:32,000. WB: 0.3-1 µg/ml.
Reactivity:	Human (Expected from sequence similarity: Mouse, Rat, Dog)
Host:	Goat
Isotype:	IgG
Clonality:	Polyclonal
Immunogen:	Peptide with sequence C-LQRHLLPASH, from the internal region of the protein sequence according to NP_005272.1.
Formulation:	Supplied at 0.5 mg/ml in Tris saline, 0.02% sodium azide, pH7.3 with 0.5% bovine serum albumin.
Concentration:	lot specific
Purification:	Purified from goat serum by ammonium sulphate precipitation followed by antigen affinity chromatography using the immunizing peptide. Supplied at 0.5 mg/ml in Tris saline, 0.02% sodium azide, pH7.3 with 0.5% bovine serum albumin. Aliquot and store at -20°C. Minimize freezing and thawing.
Conjugation:	Unconjugated
Storage:	Store at -20°C as received.
Stability:	Stable for 12 months from date of receipt.
Gene Name:	G protein-coupled receptor 3
Database Link:	<a href="#">NP_005272</a> <a href="#">Entrez Gene 14748 MouseEntrez Gene 266769 RatEntrez Gene 487344 DogEntrez Gene 2827 Human P46089</a>
Background:	Orphan receptor. The activity of this receptor is mediated by G proteins which activate adenylate cyclase
Synonyms:	ACCA
Protein Families:	Druggable Genome, GPCR, Transmembrane



[View online »](#)

**Product images:**

TA303266 (0.3ug/ml) staining of Human Brain (Frontal Cortex) lysate (35ug protein in RIPA buffer). Primary incubation was 1 hour. Detected by chemiluminescence.