

Product datasheet for **TA303264**

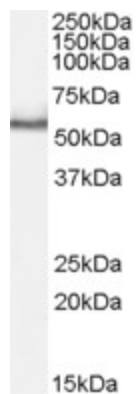
Pink1 Goat Polyclonal Antibody

Product data:

Product Type:	Primary Antibodies
Applications:	FC, PEP-ELISA, WB
Recommended Dilution:	ELISA: 1:8,000. WB: 1-3µg/ml.
Reactivity:	Rat (Expected from sequence similarity: Human, Mouse)
Host:	Goat
Isotype:	IgG
Clonality:	Polyclonal
Immunogen:	Peptide with sequence C-QGKAHLESRSYQEAQ, from the internal region of the protein sequence according to NP_115785.1.
Formulation:	Supplied at 0.5 mg/ml in Tris saline, 0.02% sodium azide, pH7.3 with 0.5% bovine serum albumin.
Concentration:	lot specific
Purification:	Purified from goat serum by ammonium sulphate precipitation followed by antigen affinity chromatography using the immunizing peptide. Supplied at 0.5 mg/ml in Tris saline, 0.02% sodium azide, pH7.3 with 0.5% bovine serum albumin. Aliquot and store at -20°C. Minimize freezing and thawing.
Conjugation:	Unconjugated
Storage:	Store at -20°C as received.
Stability:	Stable for 12 months from date of receipt.
Gene Name:	PTEN induced putative kinase 1
Database Link:	NP_001100164 Entrez Gene 65018 Human Entrez Gene 68943 Mouse Entrez Gene 298575 Rat
Background:	This gene encodes a serine/threonine protein kinase that localizes to mitochondria. It is thought to protect cells from stress-induced mitochondrial dysfunction. Mutations in this gene cause one form of autosomal recessive early-onset Parkinson disease. [provided by RefSeq]
Synonyms:	BRPK; FLJ27236; PARK6



[View online »](#)

Product images:

TA303264 (1ug/ml) staining of Rat Testis lysate (35ug protein in RIPA buffer). Primary incubation was 1 hour. Detected by chemiluminescence.