

Product datasheet for **TA303251**

APH1A Goat Polyclonal Antibody

Product data:

Product Type:	Primary Antibodies
Applications:	IHC, WB
Recommended Dilution:	ELISA: 1:128,000. WB: 0.05-0.1µg/ml.
Reactivity:	Human (Expected from sequence similarity: Mouse, Rat, Dog, Pig, Cow)
Host:	Goat
Isotype:	IgG
Clonality:	Polyclonal
Immunogen:	Peptide with sequence C-HVTDRSDARLQYG, from the internal region of the protein sequence according to NP_001071096.1; NP_057106.2.
Formulation:	Supplied at 0.5 mg/ml in Tris saline, 0.02% sodium azide, pH7.3 with 0.5% bovine serum albumin.
Concentration:	lot specific
Purification:	Purified from goat serum by ammonium sulphate precipitation followed by antigen affinity chromatography using the immunizing peptide. Supplied at 0.5 mg/ml in Tris saline, 0.02% sodium azide, pH7.3 with 0.5% bovine serum albumin. Aliquot and store at -20°C. Minimize freezing and thawing.
Conjugation:	Unconjugated
Storage:	Store at -20°C as received.
Stability:	Stable for 12 months from date of receipt.
Gene Name:	aph-1 homolog A, gamma-secretase subunit
Database Link:	NP_001071096 Entrez Gene 226548 MouseEntrez Gene 365872 RatEntrez Gene 100855839 DogEntrez Gene 483181 DogEntrez Gene 51107 Human Q96BI3



[View online »](#)

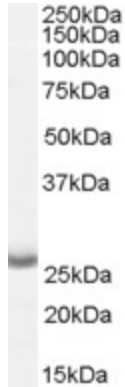
Background: APH1 is a multipass transmembrane protein that interacts with presenilin (see PSEN1; MIM 104311) and nicastrin (APH2; MIM 605254) as a functional component of the gamma-secretase complex. The gamma-secretase complex is required for the intramembrane proteolysis of a number of membrane proteins, including the amyloid-beta precursor protein (APP; MIM 104760) and Notch (MIM 190198). [supplied by OMIM]

Synonyms: 6530402N02Rik; APH-1; APH-1A; CGI-78

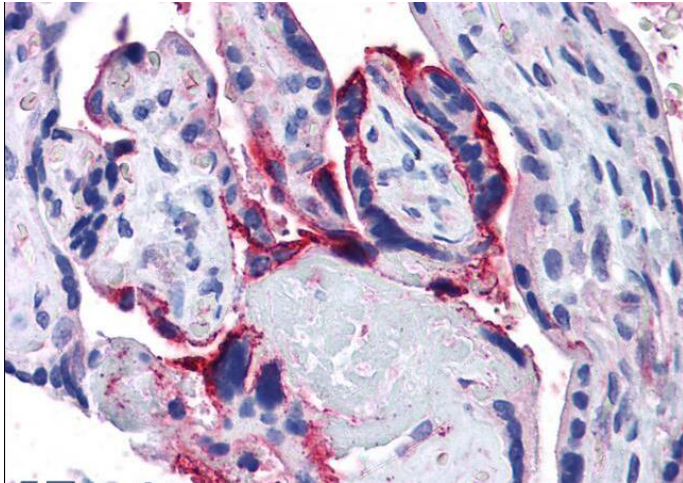
Protein Families: Druggable Genome, ES Cell Differentiation/IPS, Transmembrane

Protein Pathways: Alzheimer's disease, Notch signaling pathway

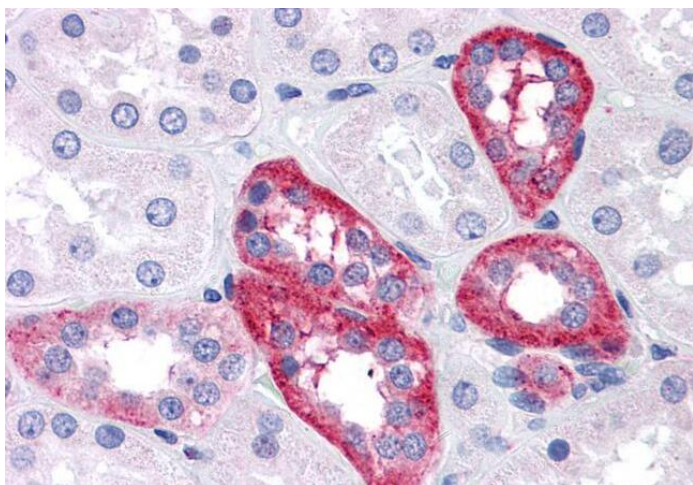
Product images:



TA303251 (0.05ug/ml) staining of Human Brain (Cerebral Cortex) lysate (35ug protein in RIPA buffer). Detected by chemiluminescence.



TA303251 (5ug/ml) staining of paraffin embedded Human Placenta. Steamed antigen retrieval with citrate buffer pH 6, AP-staining.



TA303251 (5ug/ml) staining of paraffin embedded Human Kidney. Steamed antigen retrieval with citrate buffer pH 6, AP-staining.