

## Product datasheet for **TA303246**

### PTF1A Goat Polyclonal Antibody

#### Product data:

Product Type:	Primary Antibodies
Applications:	WB
Recommended Dilution:	ELISA: 1:32,000. WB: 0.5-1.5µg/ml.
Reactivity:	Human, Mouse (Expected from sequence similarity: Rat, Dog, Zebrafish)
Host:	Goat
Isotype:	IgG
Clonality:	Polyclonal
Immunogen:	Peptide with sequence C-WTDEKQLKEQN, from the internal region of the protein sequence according to NP_835455.1.
Formulation:	Supplied at 0.5 mg/ml in Tris saline, 0.02% sodium azide, pH7.3 with 0.5% bovine serum albumin.
Concentration:	lot specific
Purification:	Purified from goat serum by ammonium sulphate precipitation followed by antigen affinity chromatography using the immunizing peptide. Supplied at 0.5 mg/ml in Tris saline, 0.02% sodium azide, pH7.3 with 0.5% bovine serum albumin. Aliquot and store at -20°C. Minimize freezing and thawing.
Conjugation:	Unconjugated
Storage:	Store at -20°C as received.
Stability:	Stable for 12 months from date of receipt.
Gene Name:	pancreas specific transcription factor, 1a
Database Link:	<a href="#">NP_835455</a> <a href="#">Entrez Gene 19213 Mouse</a> <a href="#">Entrez Gene 117034 Rat</a> <a href="#">Entrez Gene 608313 Dog</a> <a href="#">Entrez Gene 256297 Human</a> <a href="#">Q7RTS3</a>



[View online »](#)

**Background:**

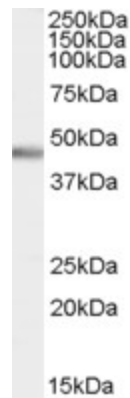
This gene encodes a protein that is a component of the pancreas transcription factor 1 complex (PTF1) and is known to have a role in mammalian pancreatic development. The protein plays a role in determining whether cells allocated to the pancreatic buds continue towards pancreatic organogenesis or revert back to duodenal fates. The protein is thought to be involved in the maintenance of exocrine pancreas-specific gene expression including elastase 1 and amylase. Mutations in this gene cause cerebellar agenesis and loss of expression is seen in ductal type pancreas cancers. [provided by RefSeq]

**Synonyms:**

bHLHa29; PACA; PAGEN2; PTF1-p48

**Protein Families:**

Embryonic stem cells, ES Cell Differentiation/IPS

**Product images:**

TA303246 (0.5ug/ml) staining of Human Brain (Cerebellum) lysate (35ug protein in RIPA buffer). Primary incubation was 1 hour. Detected by chemiluminescence.