

Product datasheet for **TA303242**

CD11b (ITGAM) Goat Polyclonal Antibody

Product data:

Product Type:	Primary Antibodies
Applications:	IHC, WB
Recommended Dilution:	ELISA: 1:32,000; WB: 1-3 ug/ml; IHC: 2-4 ug/ml
Reactivity:	Human (Expected from sequence similarity: Mouse, Rat, Dog)
Host:	Goat
Isotype:	IgG
Clonality:	Polyclonal
Immunogen:	Peptide with sequence C-RNDGEDSYRTQ, from the internal region of the protein sequence according to NP_000623.2.
Formulation:	Supplied at 0.5 mg/ml in Tris saline, 0.02% sodium azide, pH7.3 with 0.5% bovine serum albumin.
Concentration:	lot specific
Purification:	Purified from goat serum by ammonium sulphate precipitation followed by antigen affinity chromatography using the immunizing peptide. Supplied at 0.5 mg/ml in Tris saline, 0.02% sodium azide, pH7.3 with 0.5% bovine serum albumin. Aliquot and store at -20°C. Minimize freezing and thawing.
Conjugation:	Unconjugated
Storage:	Store at -20°C as received.
Stability:	Stable for 12 months from date of receipt.
Gene Name:	integrin subunit alpha M
Database Link:	NP_000623 Entrez Gene 16409 Mouse Entrez Gene 25021 Rat Entrez Gene 489928 Dog Entrez Gene 3684 Human P11215



[View online »](#)

Background: This gene encodes the integrin alpha M chain. Integrins are heterodimeric integral membrane proteins composed of an alpha chain and a beta chain. This I-domain containing alpha integrin combines with the beta 2 chain (ITGB2) to form a leukocyte-specific integrin referred to as macrophage receptor 1 ('Mac-1'), or inactivated-C3b (iC3b) receptor 3 ('CR3'). The alpha M beta 2 integrin is important in the adherence of neutrophils and monocytes to stimulated endothelium, and also in the phagocytosis of complement coated particles. Some integrin alpha M proteins contain an inserted amino acid (Q, between AA positions 499 and 500) resulting from a 3bp shift in a splice acceptor that inserts the codon CAG; receptors with or without the extra amino acid are functionally indistinguishable [provided by RefSeq].

Synonyms: CD11B; CR3A; MAC-1; MAC1A; MO1A; SLEB6

Note: In paraffin embedded Human Brain shows staining of microglia

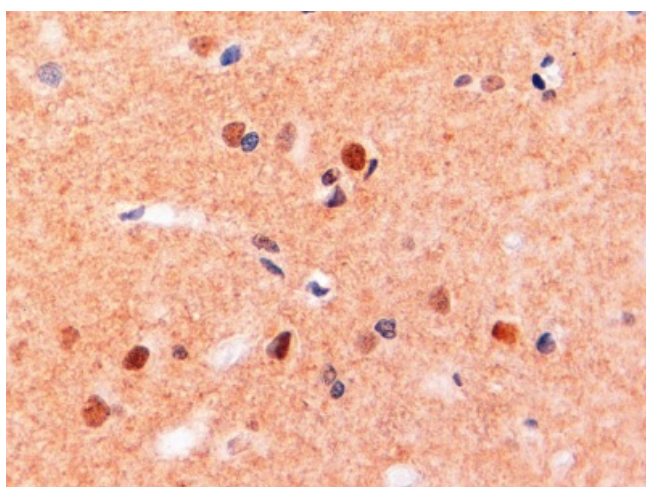
Protein Families: Druggable Genome, ES Cell Differentiation/IPS, Transmembrane

Protein Pathways: Cell adhesion molecules (CAMs), Hematopoietic cell lineage, Leukocyte transendothelial migration, Regulation of actin cytoskeleton

Product images:



TA303242 (0.3ug/ml) staining of Human Brain (Cerebellum) lysate (35ug protein in RIPA buffer). Primary incubation was 1 hour. Detected by chemiluminescence.



TA303242 (2ug/ml) staining of paraffin embedded Human Brain. Steamed antigen retrieval with Tris/EDTA buffer pH 9, HRP-staining.