

## Product datasheet for **TA303232**

### Pax6 Goat Polyclonal Antibody

#### Product data:

Product Type:	Primary Antibodies
Applications:	WB
Recommended Dilution:	ELISA: 1:32,000. WB: 0.3-1 µg/ml.
Reactivity:	Mouse (Expected from sequence similarity: Human, Rat)
Host:	Goat
Isotype:	IgG
Clonality:	Polyclonal
Immunogen:	Peptide with sequence C-REEKLRNQRQASN, from the internal region of the protein sequence according to NP_000271.1; NP_001595.2.
Formulation:	Supplied at 0.5 mg/ml in Tris saline, 0.02% sodium azide, pH7.3 with 0.5% bovine serum albumin.
Concentration:	lot specific
Purification:	Purified from goat serum by ammonium sulphate precipitation followed by antigen affinity chromatography using the immunizing peptide. Supplied at 0.5 mg/ml in Tris saline, 0.02% sodium azide, pH7.3 with 0.5% bovine serum albumin. Aliquot and store at -20°C. Minimize freezing and thawing.
Conjugation:	Unconjugated
Storage:	Store at -20°C as received.
Stability:	Stable for 12 months from date of receipt.
Gene Name:	paired box 6
Database Link:	<a href="#">NP_038655</a> <a href="#">Entrez Gene 5080 Human</a> <a href="#">Entrez Gene 25509 Rat</a> <a href="#">Entrez Gene 18508 Mouse P63015</a>



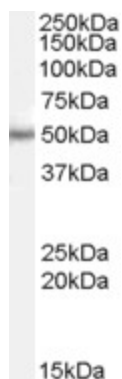
[View online »](#)

**Background:**

This gene encodes paired box gene 6, one of many human homologs of the *Drosophila melanogaster* gene *prd*. In addition to the hallmark feature of this gene family, a conserved paired box domain, the encoded protein also contains a homeo box domain. Both domains are known to bind DNA, and function as regulators of gene transcription. This gene is expressed in the developing nervous system, and in developing eyes. Mutations in this gene are known to cause ocular disorders such as aniridia and Peter's anomaly. Alternatively spliced transcript variants encoding either the same or different isoform have been found for this gene. [provided by RefSeq]

**Synonyms:**

AN; AN2; D11S812E; MGC17209; MGDA; Oculorhombin; OTTHUMP00000038834; OTTHUMP00000038836; OTTHUMP00000038837; OTTHUMP00000038838; OTTHUMP00000038839; OTTHUMP00000038840; WAGR

**Product images:**

TA303232 (0.5ug/ml) staining of Mouse Eye lysate (35ug protein in RIPA buffer). Primary incubation was 1 hour. Detected by chemiluminescence.