

## Product datasheet for **TA303222**

### TIA1 Goat Polyclonal Antibody

#### Product data:

Product Type:	Primary Antibodies
Applications:	IF, IHC, WB
Recommended Dilution:	ELISA: 1:128,000. WB: 0.1-0.3µg/ml.IHC:3.75µg/ml.IF:5µg/ml.
Reactivity:	Human (Expected from sequence similarity: Mouse, Rat, Dog)
Host:	Goat
Isotype:	IgG
Clonality:	Polyclonal
Immunogen:	Peptide with sequence C-PKSTYESNTKQ, from the internal region of the protein sequence according to NP_071320.1; NP_071505.1.
Formulation:	Supplied at 0.5 mg/ml in Tris saline, 0.02% sodium azide, pH7.3 with 0.5% bovine serum albumin.
Concentration:	lot specific
Purification:	Purified from goat serum by ammonium sulphate precipitation followed by antigen affinity chromatography using the immunizing peptide. Supplied at 0.5 mg/ml in Tris saline, 0.02% sodium azide, pH7.3 with 0.5% bovine serum albumin. Aliquot and store at -20°C. Minimize freezing and thawing.
Conjugation:	Unconjugated
Storage:	Store at -20°C as received.
Stability:	Stable for 12 months from date of receipt.
Gene Name:	TIA1 cytotoxic granule-associated RNA binding protein
Database Link:	<a href="#">NP_071320</a> <a href="#">Entrez Gene 21841 Mouse</a> <a href="#">Entrez Gene 312510 Rat</a> <a href="#">Entrez Gene 610625 Dog</a> <a href="#">Entrez Gene 7072 Human</a> <a href="#">P31483</a>



[View online »](#)

**Background:**

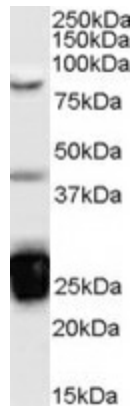
The product encoded by this gene is a member of a RNA-binding protein family and possesses nucleolytic activity against cytotoxic lymphocyte (CTL) target cells. It has been suggested that this protein may be involved in the induction of apoptosis as it preferentially recognizes poly(A) homopolymers and induces DNA fragmentation in CTL targets. The major granule-associated species is a 15-kDa protein that is thought to be derived from the carboxyl terminus of the 40-kDa product by proteolytic processing. Alternative splicing resulting in different isoforms of this gene product has been described in the literature. [provided by RefSeq]

**Synonyms:**

TIA-1; WDM

**Protein Families:**

Druggable Genome

**Product images:**

TA303222 (0.1ug/ml) staining of Jurkat cell lysate (35ug protein in RIPA buffer). Primary incubation was 1 hour. Detected by chemiluminescence.