

## Product datasheet for **TA303215**

### **PDI (PDIA2) Goat Polyclonal Antibody**

#### **Product data:**

<b>Product Type:</b>	Primary Antibodies
<b>Applications:</b>	IHC, WB
<b>Recommended Dilution:</b>	ELISA: 1:64,000. WB: 0.01-0.03µg/ml.
<b>Reactivity:</b>	Human (Expected from sequence similarity: Mouse, Rat)
<b>Host:</b>	Goat
<b>Isotype:</b>	IgG
<b>Clonality:</b>	Polyclonal
<b>Immunogen:</b>	Peptide with sequence C-NLETTKKYAPVD, from the internal region of the protein sequence according to NP_006840.2.
<b>Formulation:</b>	Supplied at 0.5 mg/ml in Tris saline, 0.02% sodium azide, pH7.3 with 0.5% bovine serum albumin.
<b>Concentration:</b>	lot specific
<b>Purification:</b>	Purified from goat serum by ammonium sulphate precipitation followed by antigen affinity chromatography using the immunizing peptide. Supplied at 0.5 mg/ml in Tris saline, 0.02% sodium azide, pH7.3 with 0.5% bovine serum albumin. Aliquot and store at -20°C. Minimize freezing and thawing.
<b>Conjugation:</b>	Unconjugated
<b>Storage:</b>	Store at -20°C as received.
<b>Stability:</b>	Stable for 12 months from date of receipt.
<b>Gene Name:</b>	protein disulfide isomerase family A member 2
<b>Database Link:</b>	<a href="#">NP_006840</a> <a href="#">Entrez Gene 69191 Mouse</a> <a href="#">Entrez Gene 287164 Rat</a> <a href="#">Entrez Gene 64714 Human</a> <a href="#">Q13087</a>
<b>Background:</b>	Protein disulfide isomerases (EC 5.3.4.1), such as PDIP, are endoplasmic reticulum (ER) resident proteins that catalyze protein folding and thiol-disulfide interchange reactions (Desilva et al., 1996 [PubMed 8561901]). [supplied by OMIM]
<b>Synonyms:</b>	PDA2; PDI; PDIP; PDIR
<b>Protein Families:</b>	Druggable Genome

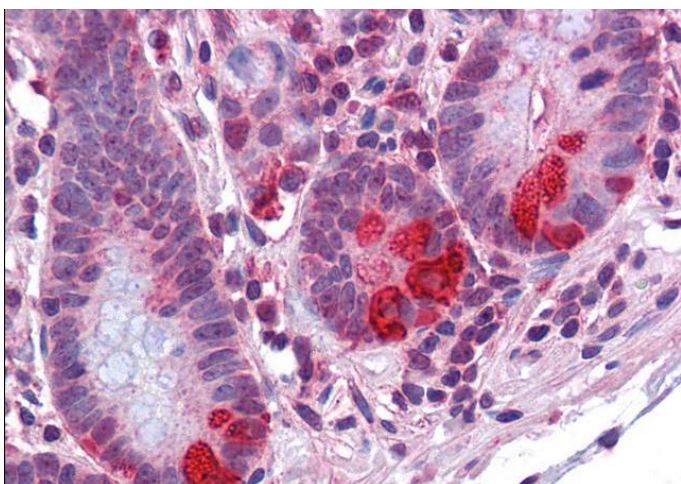


[View online »](#)

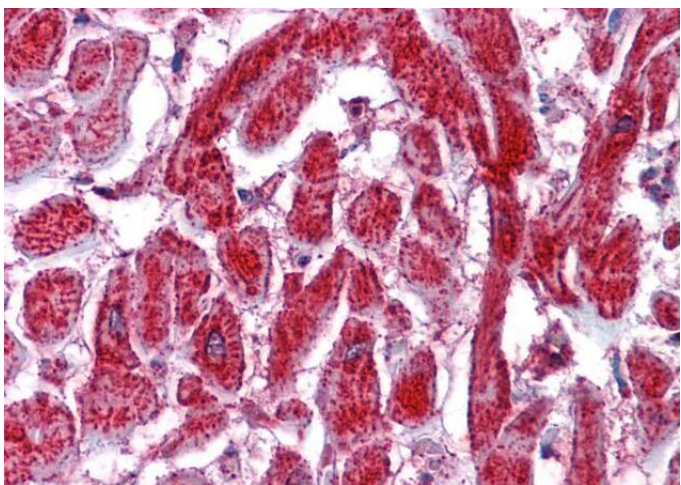
**Product images:**

250kDa  
150kDa  
100kDa  
75kDa  
50kDa  
37kDa  
25kDa  
20kDa  
15kDa  
10kDa

TA303215 (0.03ug/ml) staining of Human Pancreas lysate (35ug protein in RIPA buffer). Detected by chemiluminescence.



TA303215 (3.75ug/ml) staining of paraffin embedded Human Small Intestine. Steamed antigen retrieval with citrate buffer pH 6, AP-staining.



TA303215 (3.75ug/ml) staining of paraffin embedded Human Heart. Steamed antigen retrieval with citrate buffer pH 6, AP-staining.