

## Product datasheet for **TA303206**

### **NANOG Goat Polyclonal Antibody**

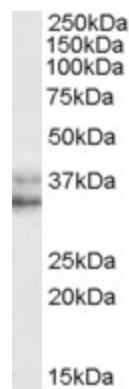
#### **Product data:**

<b>Product Type:</b>	Primary Antibodies
<b>Applications:</b>	WB
<b>Recommended Dilution:</b>	ELISA: 1:128,000. WB: 0.05-0.1 µg/ml.
<b>Reactivity:</b>	Human
<b>Host:</b>	Goat
<b>Isotype:</b>	IgG
<b>Clonality:</b>	Polyclonal
<b>Immunogen:</b>	Peptide with sequence C-DLFLNYSMNMQPED, from the C Terminus of the protein sequence according to NP_079141.1.
<b>Formulation:</b>	Supplied at 0.5 mg/ml in Tris saline, 0.02% sodium azide, pH7.3 with 0.5% bovine serum albumin.
<b>Concentration:</b>	lot specific
<b>Purification:</b>	Purified from goat serum by ammonium sulphate precipitation followed by antigen affinity chromatography using the immunizing peptide. Supplied at 0.5 mg/ml in Tris saline, 0.02% sodium azide, pH7.3 with 0.5% bovine serum albumin. Aliquot and store at -20°C. Minimize freezing and thawing.
<b>Conjugation:</b>	Unconjugated
<b>Storage:</b>	Store at -20°C as received.
<b>Stability:</b>	Stable for 12 months from date of receipt.
<b>Gene Name:</b>	Nanog homeobox
<b>Database Link:</b>	<a href="#">NP_079141</a> <a href="#">Entrez Gene 79923 Human</a> <a href="#">Q9H9S0</a>



[View online »](#)

<b>Background:</b>	Transcription regulator involved in inner cell mass and embryonic stem (ES) cells proliferation and self-renewal. Imposes pluripotency on ES cells and prevents their differentiation towards extraembryonic endoderm and trophoctoderm lineages. Blocks bone morphogenetic protein-induced mesoderm differentiation of ES cells by physically interacting with SMAD1 and interfering with the recruitment of coactivators to the active SMAD transcriptional complexes (By similarity). Acts as a transcriptional activator or repressor (By similarity). Binds optimally to the DNA consensus sequence 5'-[CG][GA][CG]C[GC]ATTAN[GC]-3' (By similarity). When overexpressed, promotes cells to enter into S phase and proliferation (By similarity)
<b>Synonyms:</b>	homeobox transcription factor Nanog; homeobox transcription factor Nanog-delta 48; Nanog homeobox
<b>Protein Families:</b>	Cancer stem cells, Embryonic stem cells, ES Cell Differentiation/IPS, Induced pluripotent stem cells, Stem cell - Pluripotency

**Product images:**

TA303206 (0.05ug/ml) staining of HeLa (nuclear) cell lysate (35ug protein in RIPA buffer). Primary incubation was 1 hour. Detected by chemiluminescence.