

Product datasheet for **TA303204**

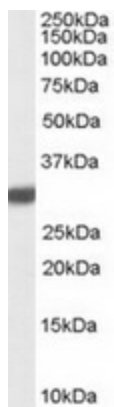
LXN Goat Polyclonal Antibody

Product data:

Product Type:	Primary Antibodies
Applications:	WB
Recommended Dilution:	ELISA: 1:128,000. WB: 1-3µg/ml.
Reactivity:	Human, Mouse, Rat (Expected from sequence similarity: Dog)
Host:	Goat
Isotype:	IgG
Clonality:	Polyclonal
Immunogen:	Peptide with sequence C-QYGTKVKHNSRLPKE, from the C Terminus of the protein sequence according to NP_064554.2.
Formulation:	Supplied at 0.5 mg/ml in Tris saline, 0.02% sodium azide, pH7.3 with 0.5% bovine serum albumin.
Concentration:	lot specific
Purification:	Purified from goat serum by ammonium sulphate precipitation followed by antigen affinity chromatography using the immunizing peptide. Supplied at 0.5 mg/ml in Tris saline, 0.02% sodium azide, pH7.3 with 0.5% bovine serum albumin. Aliquot and store at -20°C. Minimize freezing and thawing.
Conjugation:	Unconjugated
Storage:	Store at -20°C as received.
Stability:	Stable for 12 months from date of receipt.
Gene Name:	latexin
Database Link:	NP_064554 Entrez Gene 17035 MouseEntrez Gene 59073 RatEntrez Gene 610062 DogEntrez Gene 56925 Human Q9BS40
Background:	This gene encodes the only known protein inhibitor of zinc-dependent metalloproteinases.
Synonyms:	ECl; TCl



[View online »](#)

Product images:

TA303204 (0.1ug/ml) staining of Rat Brain lysate (35ug protein in RIPA buffer). Primary incubation was 1 hour. Detected by chemiluminescence.